

Inštalácia s DrakX

Oficiálna dokumentácia pre Mageiu



Texty a snímky obrazovky v tomto manuále sú dostupný pod licenciou CC BY-SA 3.0 <http://creativecommons.org/licenses/by-sa/3.0/>.

Tento manuál bol vytvorený s pomocou [Calenco CMS](http://www.calenco.com) [http://www.calenco.com] vyvinutého [NeoDoc](http://www.neodoc.biz) [http://www.neodoc.biz]om.

Bol napísaný dobrovoľníkmi v ich voľnom čase. Skontaktujte prosím [Dokumentačný tím](https://wiki.mageia.org/en/Documentation_team) [https://wiki.mageia.org/en/Documentation_team], ak by ste chceli pomôcť vylepšiť tento manuál.

Inštalácia s DrakX

Obsah

Inštalácia s DrakX	1
1. Vyberte a používajte ISO	1
1.1. Úvod	1
1.2. Dátové nosiče	1
1.3. Sťahovanie a skontrolovanie nosiča	3
1.4. Vypálenie alebo vpísanie ISO súboru	4
2. DrakX, inštalátor Mageie	7
2.1. Kroky inštalácie	7
2.2. Úvítacia inštaláčna obrazovka	8
2.3. Problémy pri inštalácii a možné riešenia	9
3. Prosím, zvolte jazyk, ktorý chcete používať	10
4. Licencia a poznámky k vydaniu	11
4.1. Licenčné ujednanie	11
4.2. Poznámky k vydaniu	12
5. Nastavenie SCSI	12
6. Inštalovanie alebo Aktualizovanie	13
7. Klávesnica	13
8. Partitioning	14
8.1. Suggested Partitioning	14
8.2. Zvoľte body pripojenia	19
8.3. Potvrdenie naformátovania pevného disku	20
8.4. Custom Disk Partitioning with DiskDrake	21
8.5. Formátovanie	24
9. Software	25
9.1. Media Selection	25
9.2. Výber pracovného prostredia	26
9.3. Výber skupín balíkov	28
9.4. Minimálna inštalácia	28
9.5. Výber jednotlivých balíčkov	30
10. User Management	31
10.1. Nastavenie správcovho (rootovho) hesla:	31
10.2. Pridať používateľa	31
10.3. User Management (advanced)	32
11. Graphical Configuration	33
11.1. Nastavenie grafickej karty a monitoru	33
11.2. Výber X Servera (Konfigurácia vašej grafickej karty)	34
11.3. Výber vášho monitoru	35
12. Bootloader	37
12.1. Grub2	37
12.2. Bootloader Setup	37
12.3. Other Options	41
13. Configuration Summary	42
13.1. Parametre systému	42
13.2. Hardvérové parametre	43
13.3. Nastavenia siete a internetu	44
13.4. Bezpečnosť	44
14. Locale	45
14.1. Nastavenie časového pásma	45
14.2. Vyberte si vašu Krajinu / Región	46
15. Nastavenie služieb	47
16. Výber myši	48

17. Konfigurácia zvuku	49
17.1. Rozšírené	49
18. Úroveň bezpečnosti	50
19. Firewall	51
20. Aktualizácie	52
21. Gratulujeme	53
22. Odinštalovanie Mageie	53

Zoznam obrázkov

1. EFI System Partition	22
2. BIOS boot partition	23

Ἰν#ταλ/χια σ ΔρακΞ



Nikto sa nestretne so všetkými inštalačnými obrazovkami, ktoré vidíte v tomto manuáli. Ktorú obrazovku uvidíte, závisí na vašom hardvéri a na voľbách, ktoré spravíte počas inštalácie.

1. Vyberte a používajte ISO

1.1. Úvod

Mageia is distributed via ISO images. This page will help you to choose which image best suits your needs.

There are three types of installation media:

- **Classical installer:** Booting with this media provides you with the maximum flexibility when choosing what to install, and for configuring your system. In particular, you have a choice of which Desktop environment to install.
- **LIVE media:** This option allows you to try out Mageia without having to actually install it, or make any changes to your computer. However, the Live media also includes an Installer, which can be started when booting the media, or after booting into the Live operating system itself.



The Live Installer is simpler compared to the Classical Installer - but you have fewer configuration options.



Live ISOs can only be used to create “clean” installations, they cannot be used to upgrade previously installed Mageia releases.

- **Net Install:** These are minimal ISO's containing no more than that which is needed to start the DrakX installer and find DrakX-installer-stage2 and other packages that are needed to continue and complete the install. These packages may be on the PC hard disk, on a local drive, on a local network or on the Internet.

These media are very light (less than 100 MB) and are convenient if bandwidth is too low to download a full DVD, or if you have a PC without a DVD drive or is unable to boot from a USB stick.

More details are given in the next sections.

1.2. Dátové nosiče

1.2.1. Definícia

Here, a medium (plural: media) is an ISO image file that allows you to install and/or update Mageia and, by extension, any physical medium (DVD, USB stick, ...) the ISO file is copied to.

You can find Mageia ISO's [here](http://www.mageia.org/en/downloads/) [http://www.mageia.org/en/downloads/].

1.2.2. Klasické inštalačné nosiče

1.2.2.1. Bežné vlastnosti

- These ISOs use the Classical installer called DrakX
- They are used for performing clean installs or to upgrade a previously installed version of Mageia
- Different media for 32 and 64-bit architectures
- Some tools are available in the Installer “Welcome” screen: Ρεσχυε Σψστεμ, Μεμοριψ Τεστ, and Ηαρδωαρε Δετεχτιον Τοολ
- Each DVD contains many available desktop environments and languages
- You'll be given the choice during the installation to add non-free software

1.2.3. Živé nosiče

1.2.3.1. Bežné vlastnosti

- Can be used to preview the Mageia operating system without having to install it
- The Live media also includes an Installer.
- Each ISO contains only one desktop environment (Plasma, GNOME or Xfce)
- Different media for 32 and 64-bit architectures
- They contain non-free software

1.2.3.2. Live DVD Plasma

- Plasma desktop environment only
- All available languages are present
- 64-bit architecture only

1.2.3.3. Živé DVD GNOME

- GNOME desktop environment only
- All available languages are present
- 64-bit architecture only

1.2.3.4. Live DVD Xfce

- Xfce desktop environment only
- All available languages are present
- 32 or 64-bit architectures

1.2.4. Net install media

1.2.4.1. Bežné vlastnosti

- Different media for 32 and 64-bit architectures
- First steps are English language only

1.2.4.2. netinstall.iso

- Contains only free software, for those who prefer to not use non-free software

1.2.4.3. netinstall-nonfree.iso

- Contains non-free software (mostly drivers, codecs...) for those who need it

1.3. Sťahovanie a skontrolovanie nosiča

1.3.1. Sťahovanie

Once you have chosen your ISO file, you can download it using either http or BitTorrent. In both cases, you are provided with some information, such as the mirror in use and an option to switch to an alternative if the bandwidth is too low.

If http is chosen you will also see some information regarding checksums.

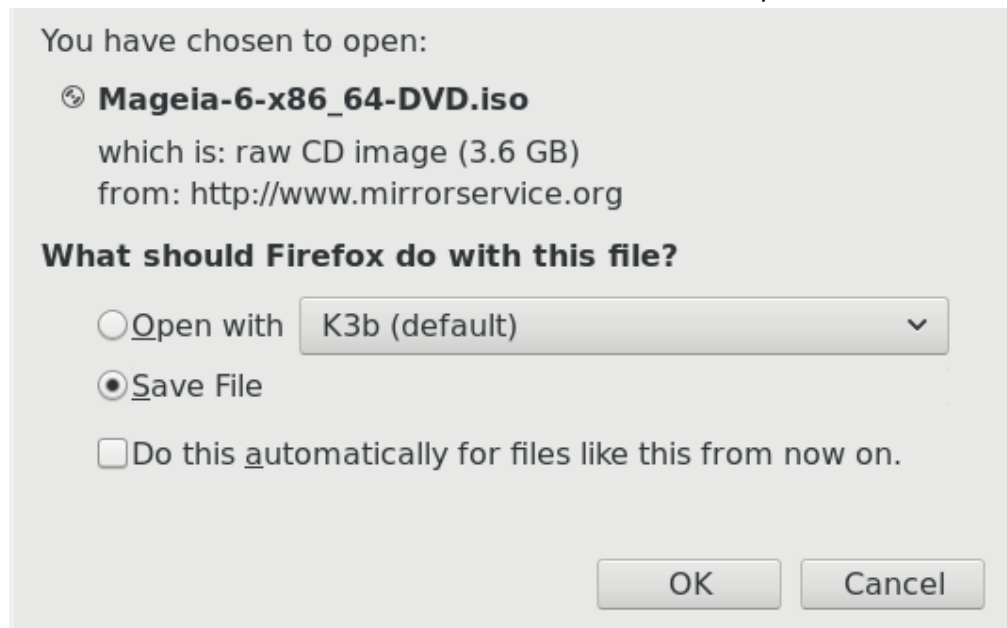
md5sum, sha1sum and sha512sum (the most secure) are tools to check the ISO integrity. Copy one of the checksums (string of alphanumeric characters) for use in the next section.

```
$ md5sum Mageia-6-x86_64-DVD.iso
55e20da532496124e6e720896fdf9fe4

$ sha1sum Mageia-6-x86_64-DVD.iso
03c496389fd39b80107077828a066163d8c38c17

$ sha512sum Mageia-6-x86_64-DVD.iso
587b2be3c3bb0d12b0a1980684bec8475d4f692bba2b97c9aa02adb085032728e5bf72fa16def321d46b7b13f68cf95476b9461a97ae01db9102ef2573db7a22
```

In the meantime, a window to download the actual ISO will open:



Click on *Σαρε Φιλε*, then click OK.

1.3.2. Checking the integrity of the downloaded media

The checksums referred to earlier, are digital fingerprints generated by an algorithm from the file to be downloaded. You may compare the checksum of your downloaded ISO against that of the original source ISO. If the checksums do not match, it means that the actual data on the ISO's do not match, and if that is the case, then you should retry the download or attempt a repair using BitTorrent.

To generate the checksum for your downloaded ISO, open a console, (no need to be root), and:

- To use the md5sum, type: **md5sum path/to/the/image/file.iso**
- To use the sha1sum, type: **sha1sum path/to/the/image/file.iso**
- To use the sha512sum, type: **sha512sum path/to/the/image/file.iso**

Example:

```
[sam5@localhost ~]$ md5sum /home/sam5/Downloads/Mageia-4-RC-x86_64-DVD.iso
ec1ce42c4b003b5e9bea6911968195c8 /home/sam5/Downloads/Mageia-4-RC-x86_64-DVD.iso
[sam5@localhost ~]$ █
```

then compare the result (you may have to wait for a while) with the ISO checksum provided by Mageia.

1.4. Vypálenie alebo vpísanie ISO súboru

The verified ISO can now be burned to a CD/DVD or “dumped” to a USB stick. This is not a standard copy operation, as a bootable medium will actually be created.

1.4.1. Napálenie ISO súboru na CD/DVD

Whichever software you use, ensure that the option to burn an *ιμαγε* is used. Burn *δατα* or *φιλες* is NOT correct. See the [the Mageia wiki](https://wiki.mageia.org/en/Writing_CD_and_DVD_images) [https://wiki.mageia.org/en/Writing_CD_and_DVD_images] for more information.

1.4.2. Vpísať ISO na USB kľúčenku

All Mageia ISOs are hybrids, which means you can dump them to a USB stick and then use that to boot and install the system.



Dumping an image onto a flash device destroys any previous file-system on the device and all existing data will be lost.



Also, the only partition on the flash device will then just be the Mageia ISO partition.

So, if an ISO of about 4GB is written to an 8GB USB stick, the stick will then only show up as 4GB. This is because the remaining 4GB is no longer formatted - hence not currently available for use. To recover the original capacity, you must reformat and repartition the USB stick.

1.4.2.1. Použitím grafického nástroja v Mageii

Môžete použiť grafický nástroj akým je [IsoDumper](https://wiki.mageia.org/en/IsoDumper_Writing_ISO_images_on_USB_sticks) [https://wiki.mageia.org/en/IsoDumper_Writing_ISO_images_on_USB_sticks]

1.4.2.2. Použitím grafického nástroja vo Windows

Môžete vyskúšať:

- [Rufus](http://rufus.akeo.ie/?locale=en_US) [http://rufus.akeo.ie/?locale=en_US] using the "ISO image" option
- [Win32 Disk Imager](http://sourceforge.net/projects/win32diskimager) [http://sourceforge.net/projects/win32diskimager]

1.4.2.3. Using the Command line within a GNU/Linux system



It is potentially **dangerous** to do this by hand. You risk overwriting potentially valuable existing data if you specify the wrong target device.

1. Otvorte konzolu
2. Become a `root` (Administrator) user with the command **su -** (don't forget the -)

```
[sam5@localhost ~]$ su -  
Password:  
[root@localhost ~]#  
[root@localhost ~]#  
[root@localhost ~]# █
```

3. Plug in your USB stick - but do not mount it (this also means do not open any application or file manager that could access or read it)
4. Enter the command **fdisk -l**

```
[root@localhost ~]# fdisk -l

Disk /dev/sda: 298.1 GiB, 320072933376 bytes, 625142448 sectors
Units: sectors of 1 * 512 = 512 bytes
Sector size (logical/physical): 512 bytes / 4096 bytes
I/O size (minimum/optimal): 4096 bytes / 4096 bytes
Disklabel type: dos
Disk identifier: 0x000db4bf
Partition 3 does not start on physical sector boundary.

Device      Boot      Start          End      Blocks      Id System
/dev/sda1   *            2048      21256191    10627072    83 Linux
/dev/sda2                21256192    63528959    21136384    83 Linux
/dev/sda3                63530964    625137344   280803190+    5 Extended
/dev/sda5                63531008    84873215    10671104    83 Linux
/dev/sda6                84875264    127016959   21070848    83 Linux
/dev/sda7                127019008   135985151    4483072     82 Linux swap / Solaris
/dev/sda8                135987200   198598655   31305728    83 Linux
/dev/sda9                198600704   471588863   136494080    83 Linux
/dev/sda10               471590912   496777994   12593541+    83 Linux
/dev/sda11               496781312   504955079    4086884     82 Linux swap / Solaris
/dev/sda12               504958976   625137344   60089184+    83 Linux

Disk /dev/sdb: 7.5 GiB, 8011087872 bytes, 15646656 sectors
Units: sectors of 1 * 512 = 512 bytes
Sector size (logical/physical): 512 bytes / 512 bytes
I/O size (minimum/optimal): 512 bytes / 512 bytes
Disklabel type: dos
Disk identifier: 0x15005631

Device      Boot Start          End      Blocks      Id System
/dev/sdb1   *            1      7598079    3799039+    17 Hidden HPFS/NTFS

[root@localhost ~]# █
```

5. Find the device name for your USB stick (by its size), for example /dev/sdb in the screenshot above, is an 8GB USB stick.

Alternatively, you can find the device name with the command **dmesg**. Towards the end of the following example, you can see the device name starting with sd, and in this case, sdd is the actual device. You can also see that its size is 2GB:

```
[72594.604531] usb 1-1: new high-speed USB device number 27 using
xhci_hcd
[72594.770528] usb 1-1: New USB device found, idVendor=8564,
idProduct=1000
[72594.770533] usb 1-1: New USB device strings: Mfr=1, Product=2,
SerialNumber=3
[72594.770536] usb 1-1: Product: Mass Storage Device
[72594.770537] usb 1-1: Manufacturer: JetFlash
[72594.770539] usb 1-1: SerialNumber: 18MJTWLMPUCC3SSB
[72594.770713] usb 1-1: ep 0x81 - rounding interval to 128 microframes,
ep desc says 255 microframes
```

```
[72594.770719] usb 1-1: ep 0x2 - rounding interval to 128 microframes,
ep desc says 255 microframes
[72594.771122] usb-storage 1-1:1.0: USB Mass Storage device detected
[72594.772447] scsi host8: usb-storage 1-1:1.0
[72595.963238] scsi 8:0:0:0: Direct-Access      JetFlash Transcend 2GB
1100 PQ: 0 ANSI: 4
[72595.963626] sd 8:0:0:0: [sdd] 4194304 512-byte logical blocks: (2.14
GB/2.00 GiB)
[72595.964104] sd 8:0:0:0: [sdd] Write Protect is off
[72595.964108] sd 8:0:0:0: [sdd] Mode Sense: 43 00 00 00
[72595.965025] sd 8:0:0:0: [sdd] No Caching mode page found
[72595.965031] sd 8:0:0:0: [sdd] Assuming drive cache: write through
[72595.967251]   sdd: sdd1
[72595.969446] sd 8:0:0:0: [sdd] Attached SCSI removable disk
```

6. Enter the command: **dd if=path/to/the/ISO/file of=/dev/sdX bs=1M**

Where X=your device name eg: /dev/sdd

Example: `dd if=/home/user/Downloads/Mageia-6-x86_64-DVD.iso of=/dev/sdd bs=1M`



It might be helpful to know that **if** stands for **input file** and **of** stands for **output file**

7. Enter the command: **sync**
8. This is the end of the process, and you may now unplug your USB stick.

2. DrakX, inštalátor Mageie

Či už ste nováčikom u GNU-Linuxu alebo pokročilým používateľom, Mageia inštalátor je navrhnutý, aby vám pomohol urobiť vašu inštaláciu alebo aktualizáciu čo najľahšou ako sa len dá.

2.1. Kroky inštalácie

- The install process is divided into a number of steps - the status of which is indicated in a panel to the left of the screen.
- Each step has one or more screens, which may also have *Αδυναμιεδ* sections with extra, less commonly required options.
- Most screens have *Ηελπ* buttons for further details about the particular step.



If at some point during the install you decide to abort the installation, it is possible to reboot, but please think twice before you do this. Once a partition has been formatted or updates have started to be installed, your computer is no longer in the same state and rebooting it could very well leave you with an unusable system.

If, in spite of this, you are very sure rebooting is what you want, go to a text terminal by pressing the keys **Ctrl+Alt+F2** together. After that, press **Ctrl+Alt+Delete** together to reboot.

2.2. Uvítacia inštalačná obrazovka

The particular screen that you will first see when booting from the Installation media will depend on whether your computer motherboard is of the Legacy (BIOS) or UEFI type.

The welcome menu screen has various options, however the default option will start the installer, and is normally all that you will need.

2.2.1. Legacy (BIOS) Systems



Menu

- **Install Mageia**

Install Mageia to a hard disk. This is the default option, and will automatically start after a short while unless another option is selected.

- **Rescue System**

This option allows you to either re-install the bootloader for an existing Mageia installation or you can use it to restore a Windows bootloader.

- **Memory Test**

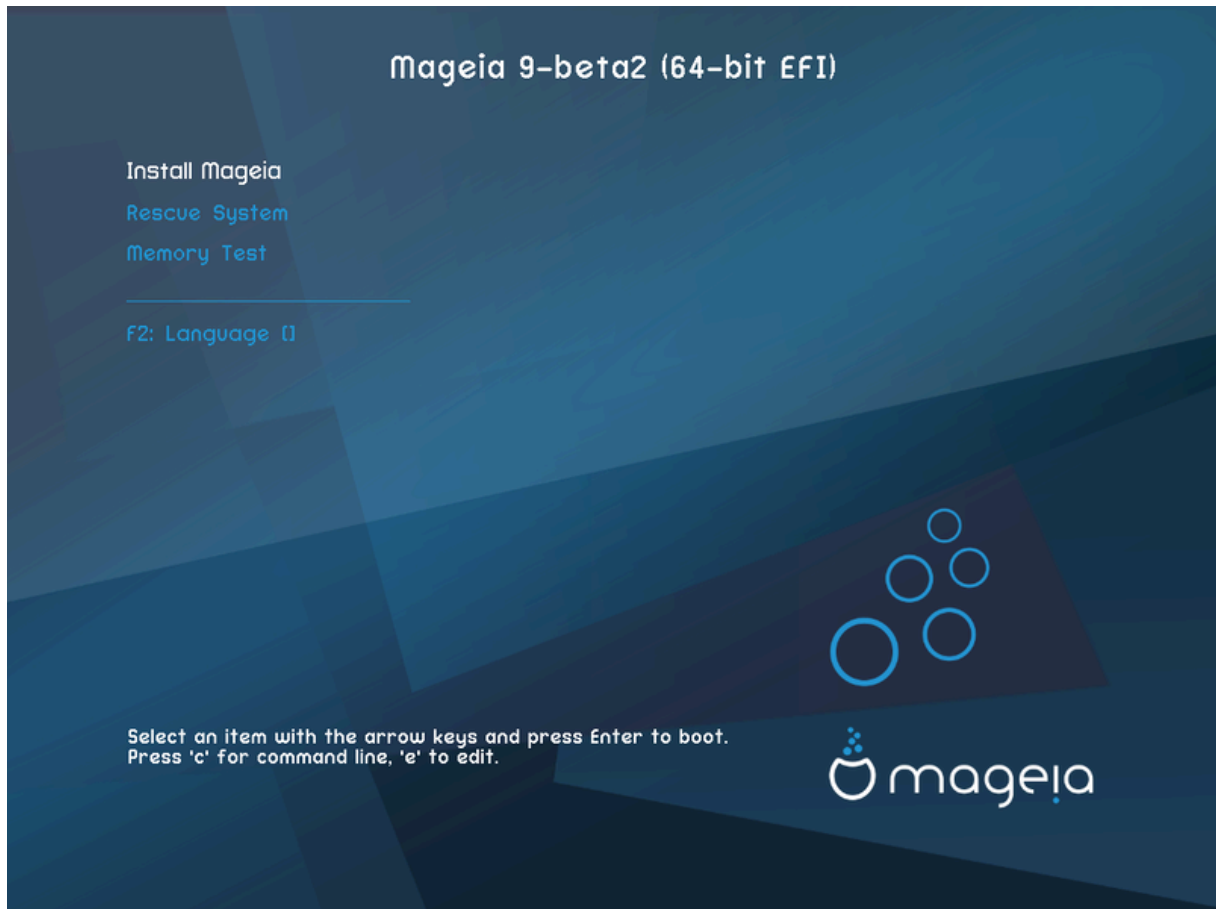
Test the installed RAM by performing multiple read and write operations. Reboot to end the test.

- **F2: Language**

Press F2 for alternative languages.

2.2.2. UEFI Systems

From this screen, you can access options by pressing **e** to enter the edit mode. To come back to this screen, press **Esc** to quit without saving or press **F10** to save and quit.



Menu

- **Install:** Start the Install process
- **Rescue:** This option allows you to either re-install the bootloader for an existing Mageia installation or you can use it to restore a Windows bootloader.
- **F2: Language:** Press **F2** for alternative languages.

If you booted from a USB stick, you will see the above options duplicated, and in this case, you should use the set that will be suffixed with "USB".

2.3. Problémy pri inštalácií a možné riešenia

2.3.1. Žiadne grafické rozhranie

- After the initial screen you did not progress to the *Λαγνυαγε Σελεχτιον* screen. This can happen with some graphic cards and older systems. Try using low resolution by typing **vgalo** at the prompt.
- If the hardware is very old, a graphical installation may not be possible. In this case it is worth trying a text-mode installation. To use this press **Esc** at the *Ωελοχομε* screen and confirm with **ENTER**. You will be presented with a black screen with a boot: prompt. Type **text** and press **ENTER** to continue with the installation in text mode.

2.3.2. Inštalácia zamrzne

If the system appeared to freeze during the installation, this may be a problem with hardware detection. In this case the automatic hardware detection may be bypassed and dealt with later. To try this, type **noauto** at the prompt. This option may also be combined with other parameters as necessary.

2.3.3. Problém s RAM

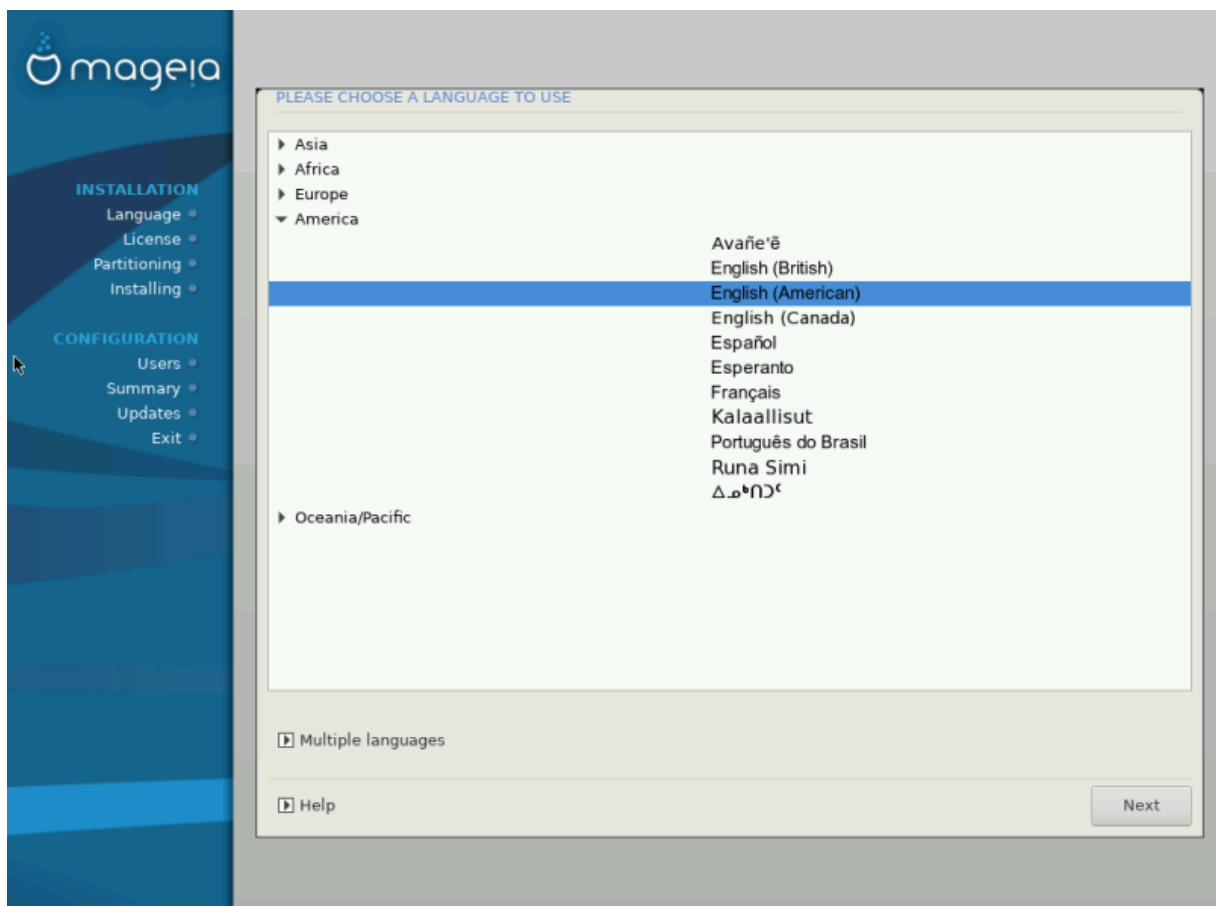
This will rarely be needed, but in some cases the hardware may report the available RAM incorrectly. To specify this manually, you can use the `mem=xxxM` parameter, where xxx is the correct amount of RAM. e.g. `mem=256M` would specify 256MB of RAM.

2.3.4. Dynamické particie

If you converted your hard disk from Basic format to Dynamic format in Microsoft Windows, then it is not possible to install Mageia on this disc. To revert to a Basic disk, see the Microsoft documentation: <http://msdn.microsoft.com/en-us/library/cc776315.aspx>.

3. Prosím, zvolte jazyk, ktorý chcete používať

- Select your preferred language, by first expanding the list for your continent. Mageia will use this selection during the installation and for your installed system.
- If it is likely that you (or others) will require several languages to be installed on your system, then you should use the `Μυλτιπλε λαγνυαγεσ` option to add them now. It will be difficult to add extra language support after installation.

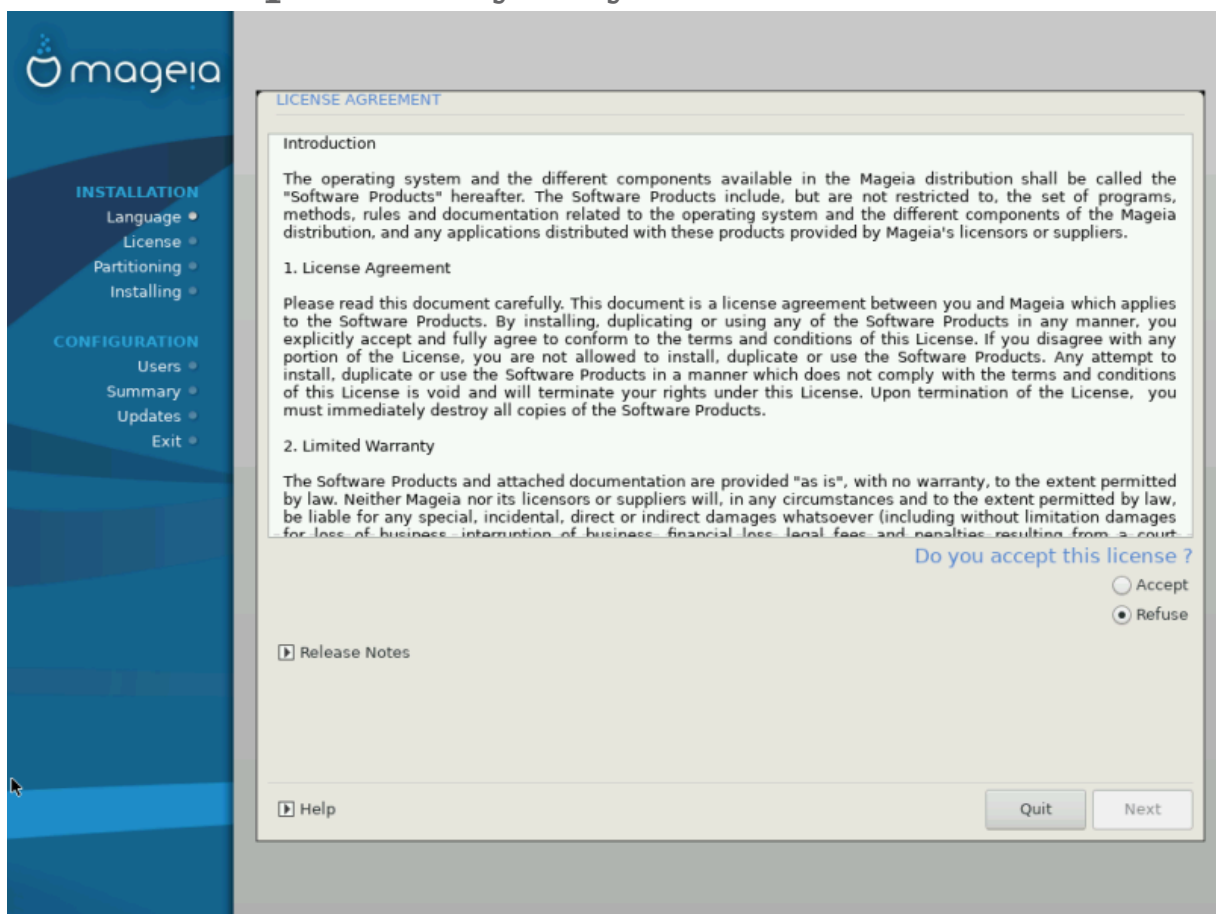




Even if you choose more than one language, you must first choose one as your preferred language from the main list of languages. It will also be marked as chosen in the *Μυλτιπλε λαγγυαγες* screen.

- If your keyboard language is not the same as your preferred language, then it is advisable to install the required language for your keyboard as well
- Mageia uses UTF-8 (Unicode) support by default. This may be disabled in the *Μυλτιπλε λαγγυαγες* screen if you know that it is inappropriate for your language. Disabling UTF-8 applies to all installed languages.
- You can change the language for your system post-installation in the Mageia Control Center # System # localization for your system.

4. Licencia a poznámky k vydaniu



4.1. Licenčné ujednanie

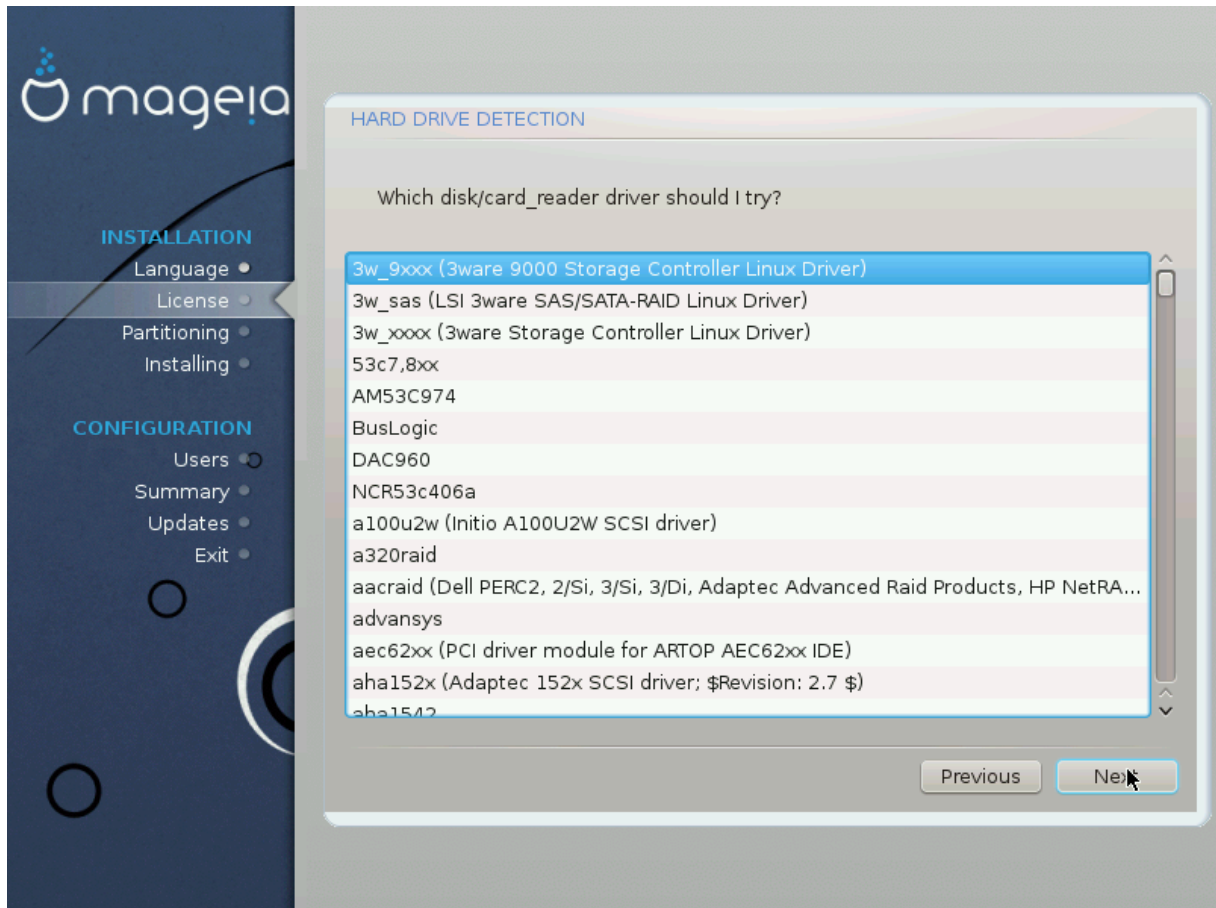
- Before installing Mageia, please read the license terms and conditions carefully.
- These terms and conditions apply to the entire Mageia distribution and must be accepted before you can continue.
- To proceed, simply select *Αχχεπτ* and then click on *Νεξτ*

If you decide not to accept these conditions, then we thank you for your interest in Mageia. Clicking *Θυιτ* will reboot your computer.

4.2. Poznámky k vydaniu

Important information about this particular Mageia release can be viewed by clicking on the [Πελασσε Νοτεσ](#) button.

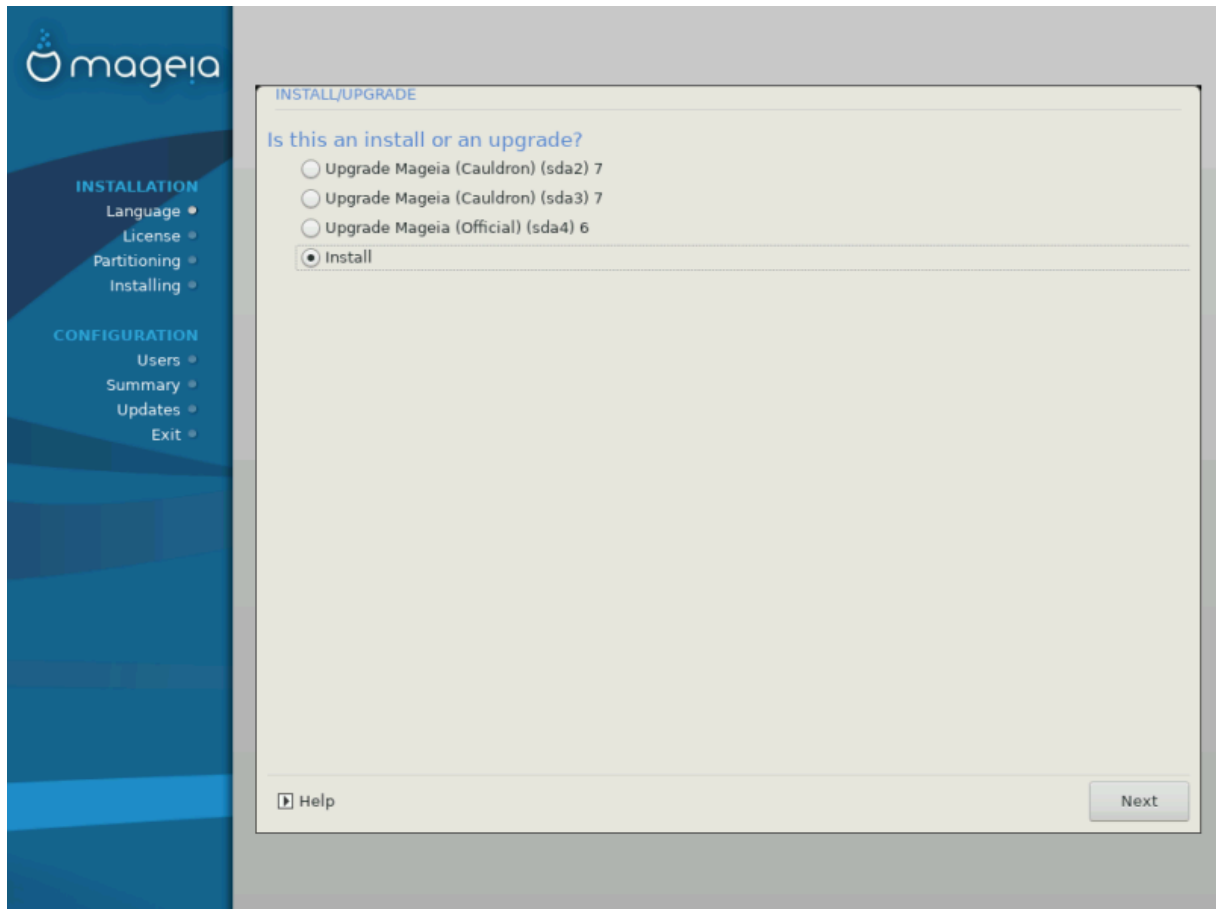
5. Nastavenie SCSI



DrakX will normally detect hard disks correctly. However, with some older SCSI controllers it may be unable to determine the correct drivers to use and subsequently fail to recognise the drive.

If your device is not recognised, you will need to manually tell DrakX which SCSI drive(s) you have. DrakX should then be able to configure the drive(s) correctly.

6. Inštalovanie alebo Aktualizovanie



- **Install**

Use this option to perform a fresh installation of Mageia. This will format the root partition (/), but can preserve a pre-existing /home partition (a dedicated /home partition, rather than being incorporated within the root (/) partition itself).

- **Upgrade**

Use this option to upgrade an existing installation of Mageia.



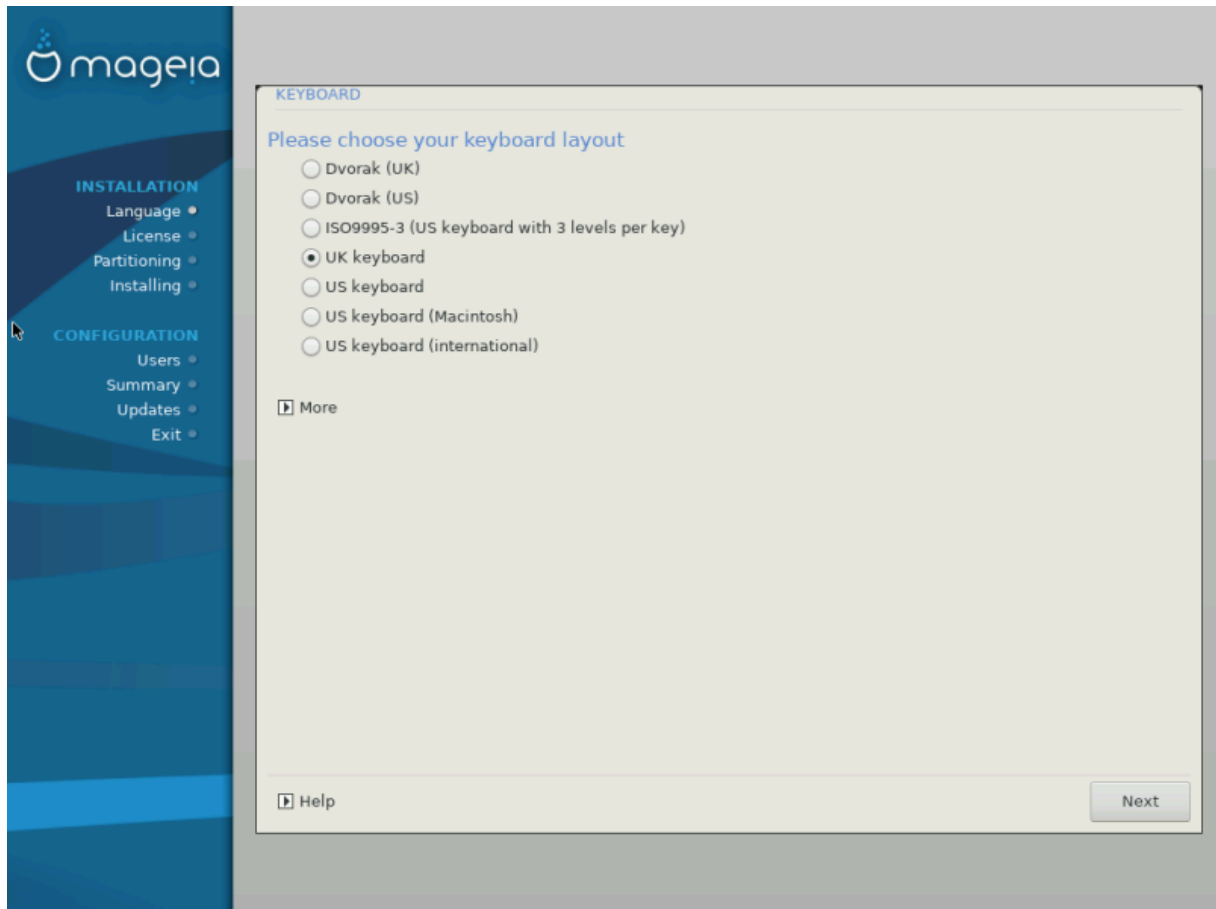
Only upgrading from a previous Mageia version that was *σταλλ συππορτεδ* when this Installer's version was released, has been thoroughly tested. If you want to upgrade a Mageia version that has reached its “End Of Life” then it is better to do a “clean” install instead, while preserving your /home partition.



If you have discovered that you forgot to select an additional language, you can return from the *Ινσταλλ ορ Υγραδε* screen to the language choice screen by pressing **Ctrl+Alt+Home**. Do **NOT** do this later in the install.

7. Klávesnica

DrakX vyberie vhodnú klávesnicu pre váš jazyk. Ak nebola nájdená žiadna vhodná klávesnica, bude predvolené rozloženie kláves americkej klávesnice.



- Uistite sa, že výber je správny alebo si vyberte iné rozloženie klávesnice. Ak nevíte, ktoré rozloženie má vaša klávesnica, pozrite sa do špecifikácií, ktoré prišli s vaším systémom, alebo sa spýtajte počítačového dodávateľa. Na klávesnici môže byť dokonca i štítok, ktorý identifikuje rozloženie kláves. Tiež sa môžete pozrieť sem: cs.wikipedia.org/wiki/Rozložení_kláves [https://cs.wikipedia.org/wiki/Rozložení_kláves]
- If your keyboard isn't in the list shown, click on More to get a fuller list, and select your keyboard there.



After choosing a keyboard from the More dialogue, you'll return to the first keyboard choice dialogue and it will seem as though a keyboard from that screen was chosen. You can safely ignore this and continue the installation: the keyboard chosen from the full list will be applied.

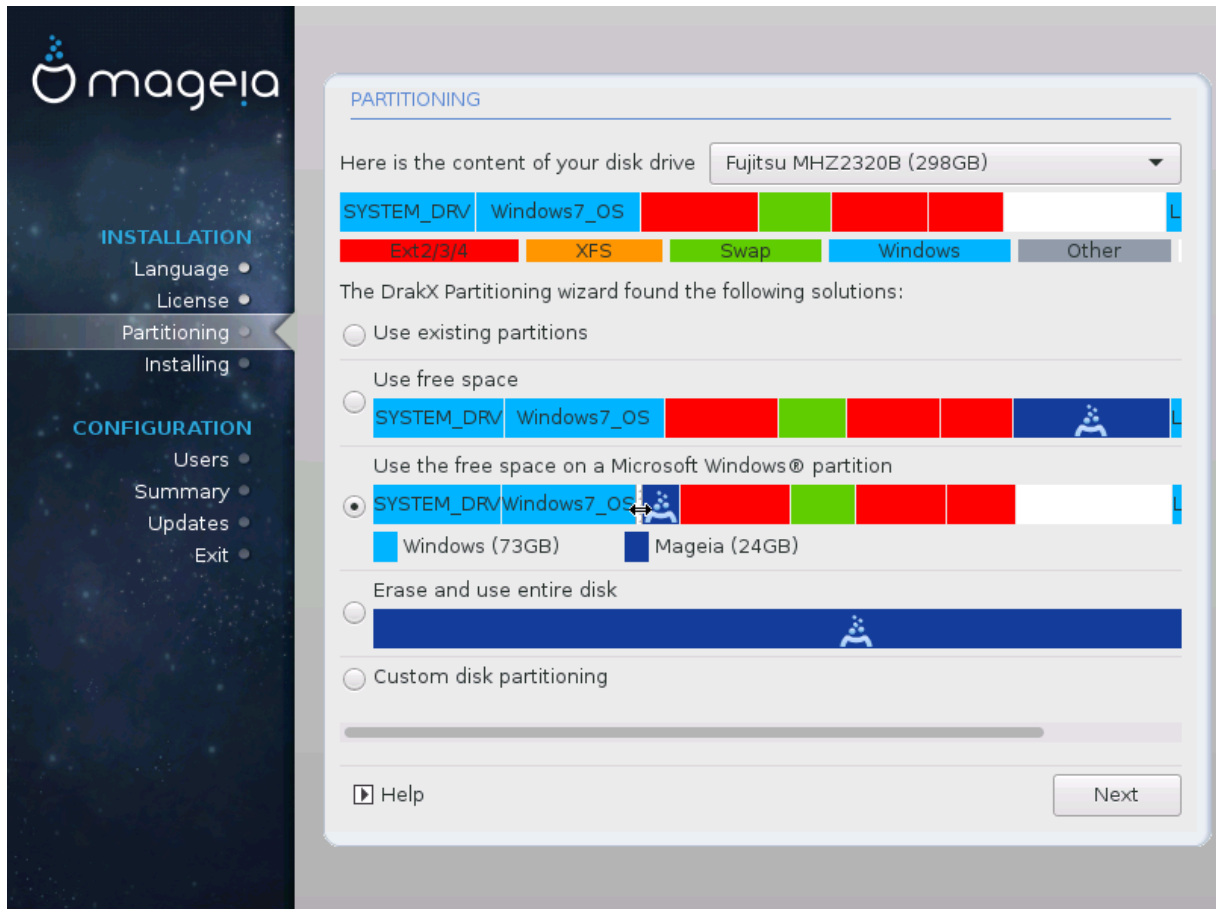
- If you choose a keyboard based on non-Latin characters, you will see an extra dialogue screen asking how you would prefer to switch between the Latin and non-Latin keyboard layouts

8. Partitioning

8.1. Suggested Partitioning

In this screen you can see the content of your hard drive(s) along with the DrakX partitioning proposals for where to install Mageia.

The actual options available from those shown below will vary according to the layout and content of your particular hard drive(s).



Main Options

- **Use Existing Partitions**

Ak je dostupná táto možnosť, potom boli nájdené jestvujúce s Linuxom kompatibilné partície a môžu byť použité pre inštaláciu.

- **Use Free Space**

Ak máte nevyužitú miesto na vašom pevnom disku, potom ho táto možnosť využije pre vašu novú inštaláciu Mageie.

- **Use Free Space on a Windows Partition**

If you have unused space on an existing Windows partition, the installer may offer to use it. This can be a useful way of making room for your new Mageia installation, but is a risky operation so you should make sure you have backed up all important files!

With this option, the installer displays the remaining Windows partition in light blue and the proposed Mageia partition in dark blue with their intended sizes just underneath. You have the option to modify these sizes by clicking and dragging the gap between both partitions. See the following screenshot:

- **Erase and use Entire Disk**

This option will allocate the entire drive for Mageia



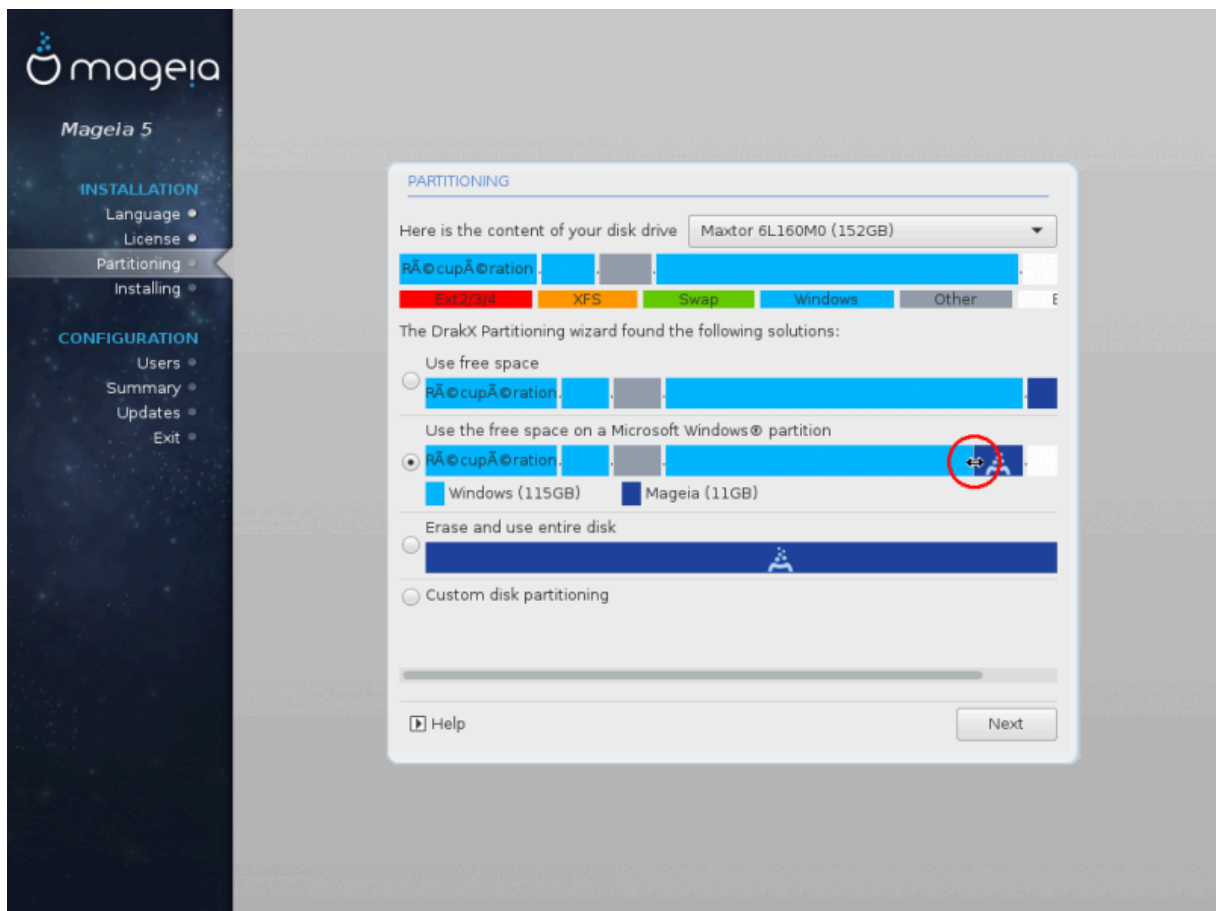
This will erase ALL data on the selected hard drive. Take care! If you intend to use part of the disk for something else, or you already have data on the drive that you are not prepared to lose, then do not use this option.



Pamätajte, že toto znamená zmenšenie veľkosti Windowsovej partície. Partícia musí byť "čistá", to znamená že Windows museli byť korektne vypnuté, keď boli naposledy použité. Tiež musela byť defragmentovaná, hoci toto nie je zárukou, že všetky súbory na partícii boli presunuté z oblasti, ktorá má byť použitá. Vysoko sa odporúča zazálohovať si vaše osobné súbory.

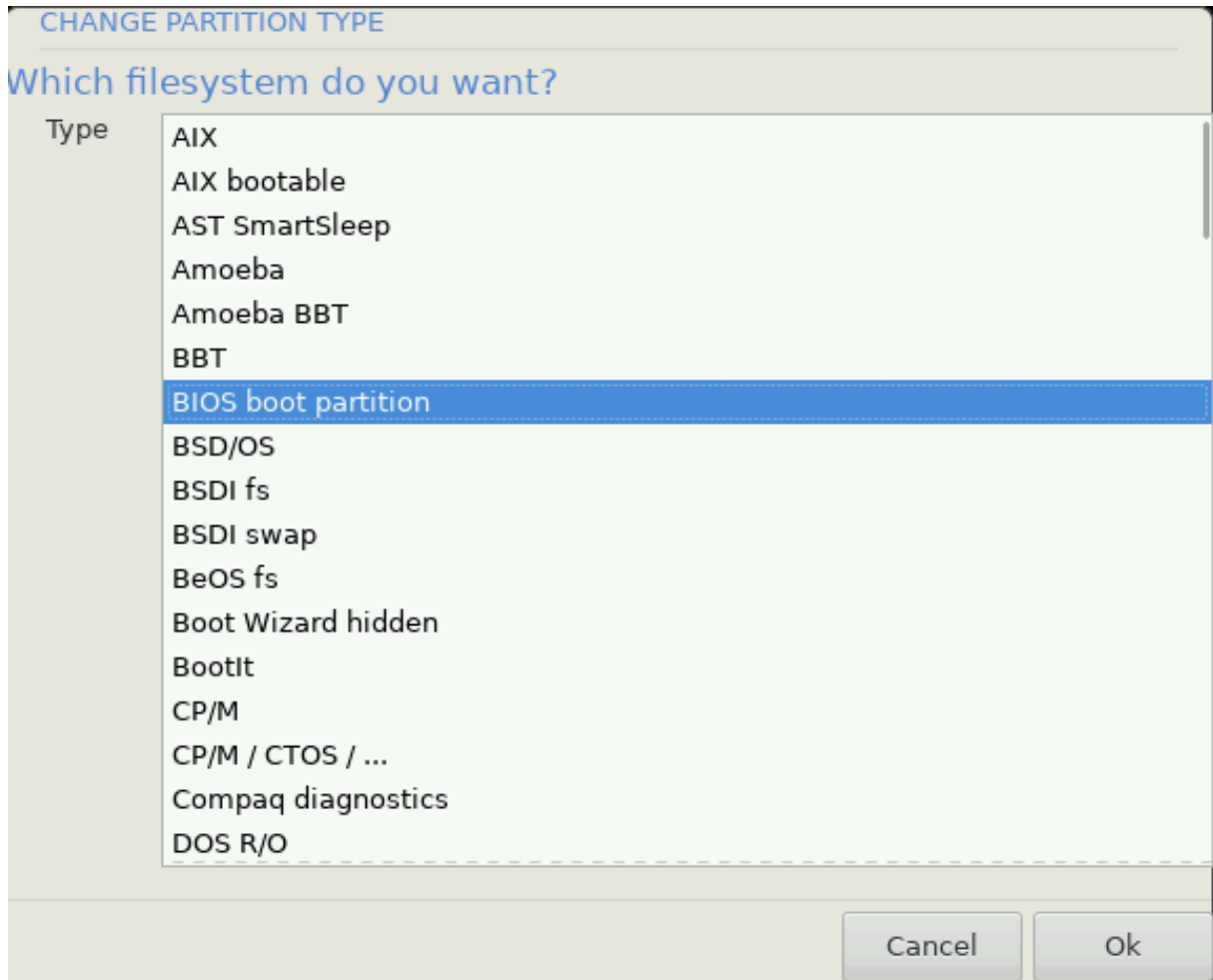
• Custom Disk Partitioning

Toto vám dáva úplnú kontrolu nad umiestnením inštalácie na vašom pevnom disku (resp. diskoch).



If you are not using the $\chi\upsilon\sigma\tau\omicron\mu$ $\delta\iota\sigma\kappa$ $\rho\alpha\rho\tau\iota\tau\iota\omicron\nu\gamma$ option, then the installer will allocate the available space according to the following rules:

- If the total available space is less than 50 GB, then only one partition is created. This will be the / (root) partition.
- If the total available space is greater than 50 GB, then three partitions are created
 - 6/19 of the total available place is allocated to / with a maximum of 50 GB
 - 1/19 is allocated to swap with a maximum of 4 GB



Some newer drives are now using 4096 byte logical sectors, instead of the previous standard of 512. Due to lack of available hardware, the partitioning tool used in the installer has not been tested with such a drive.

Some SSD devices now use an erase block size over 1 MB. If you have such a device we suggest that you partition the drive in advance, using an alternative partitioning tool like gparted, and to use the following settings:

- Αλιντο = MiB
- Φρεε σπαχε πρεχεδινγ (MiB) = 2

Also make sure all partitions are created using an even number of megabytes.

8.2. Zvoľte body pripojenia



Here you see the Linux partitions that have been found on your computer. If you don't agree with the DrakX suggestions, you can change the mount points yourself.

- To the left of the drop-down menus is a list of available partitions. For example: sda is a hard drive - and 5 is a *παρτιτιον νυμβερ*, followed by the *(χαπαχιτηψ, μουντ ποινητ, φιλεσψσπεμ τυπη)* of the partition.
- If you have several partitions, you can choose various different *μουντ ποινητς* from the drop down menu, such as /, /home and /var. You can even make your own mount points, for instance /video for a partition where you want to store your films, or perhaps /Data for all your data files.
- For any partitions that you don't need to make use of, you can leave the mount point field blank.



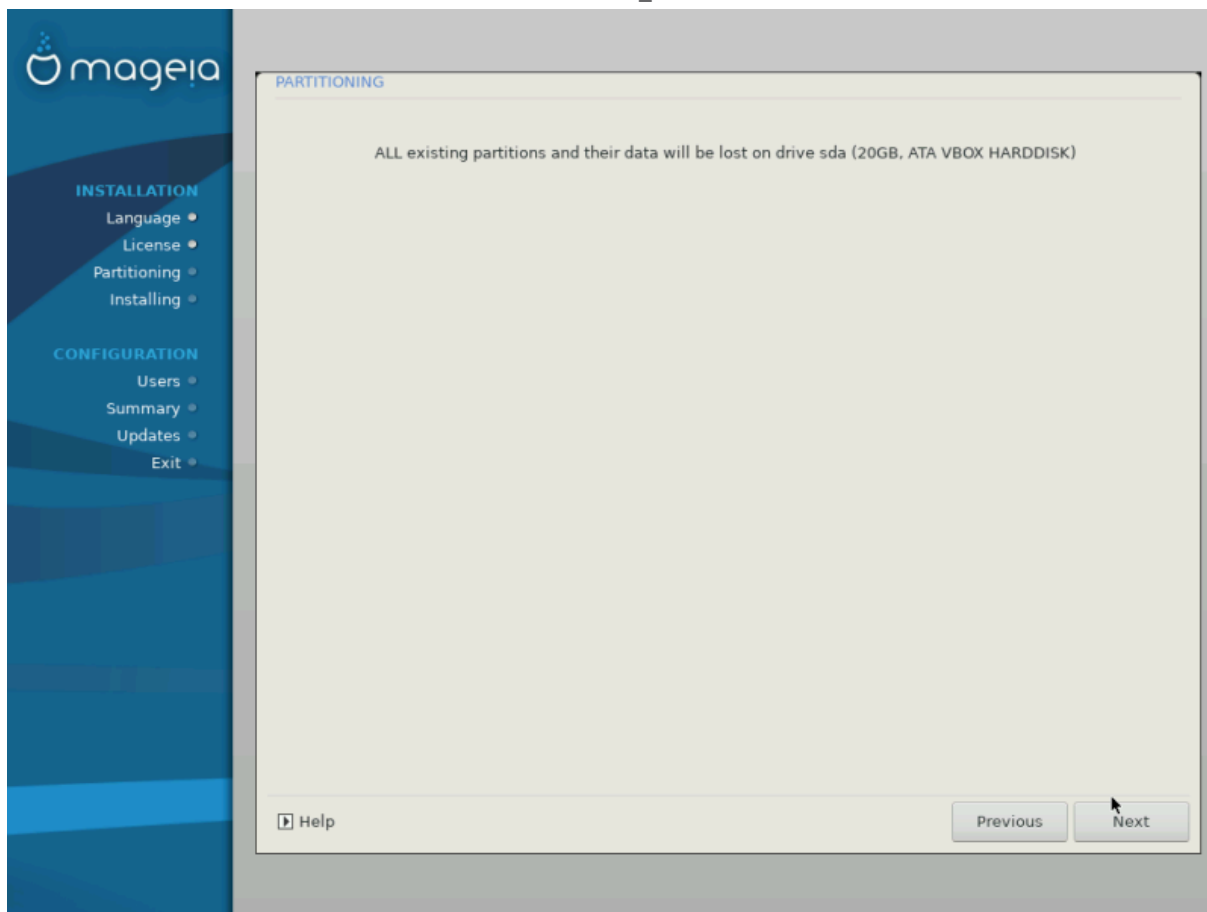
If you make any changes here, ensure you still have a / (root) partition.



If you are not sure what to choose, click *Πρεπιους* to go back and then tick *Χυστομ δισκ παρτιτιονινηγ*, where you can click on a partition to see its type and size.

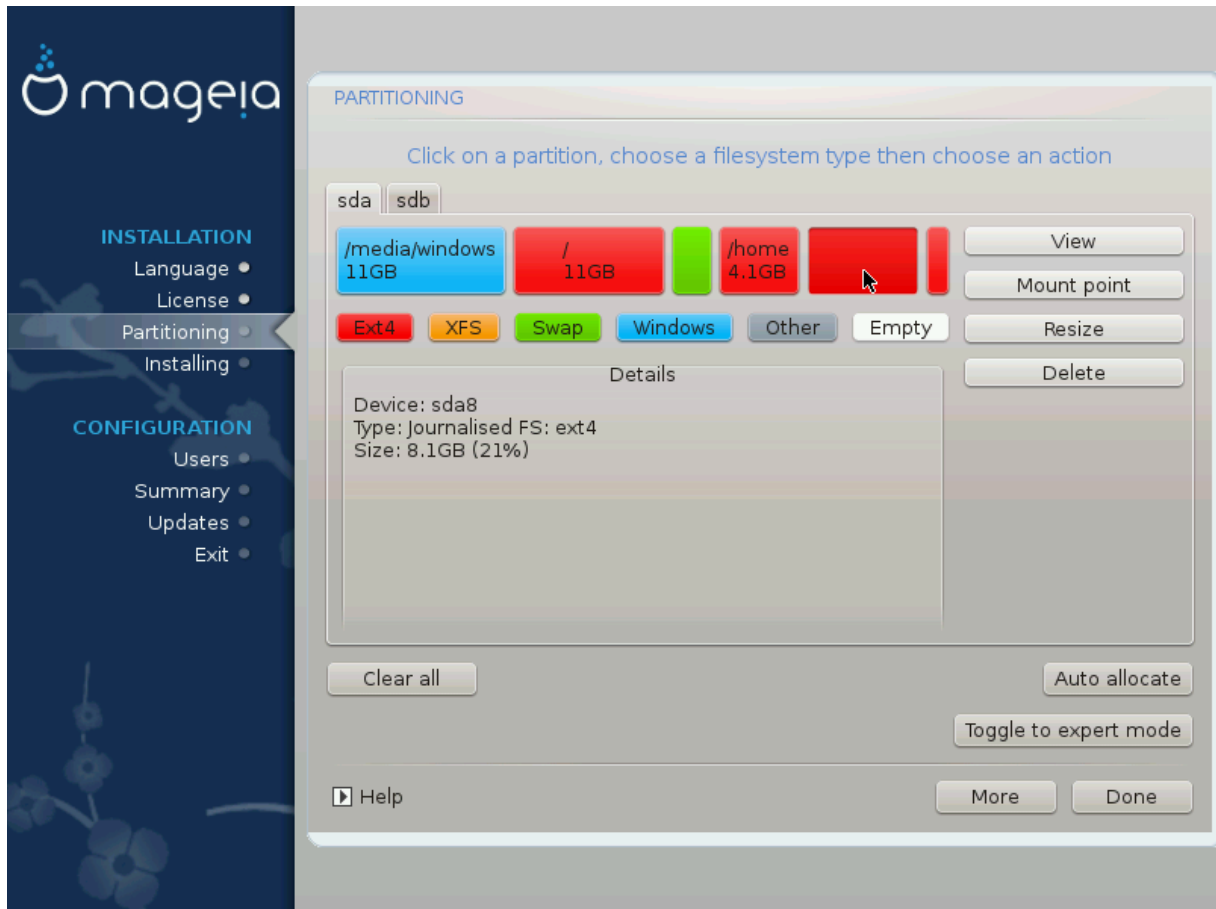
If you are sure the mount points are correct, click on **Next**, and choose whether you only want to format the partition suggested by DrakX, or more.

8.3. Potvrdenie naformátovania pevného disku



- Click on **Προηγούμενος** if you are at all unsure about your choice.
- Click on **Επόμενο** to proceed if you are sure that it is OK to erase **every** partition, **every** operating system and **all data** that might be on that hard disk.

8.4. Custom Disk Partitioning with DiskDrake



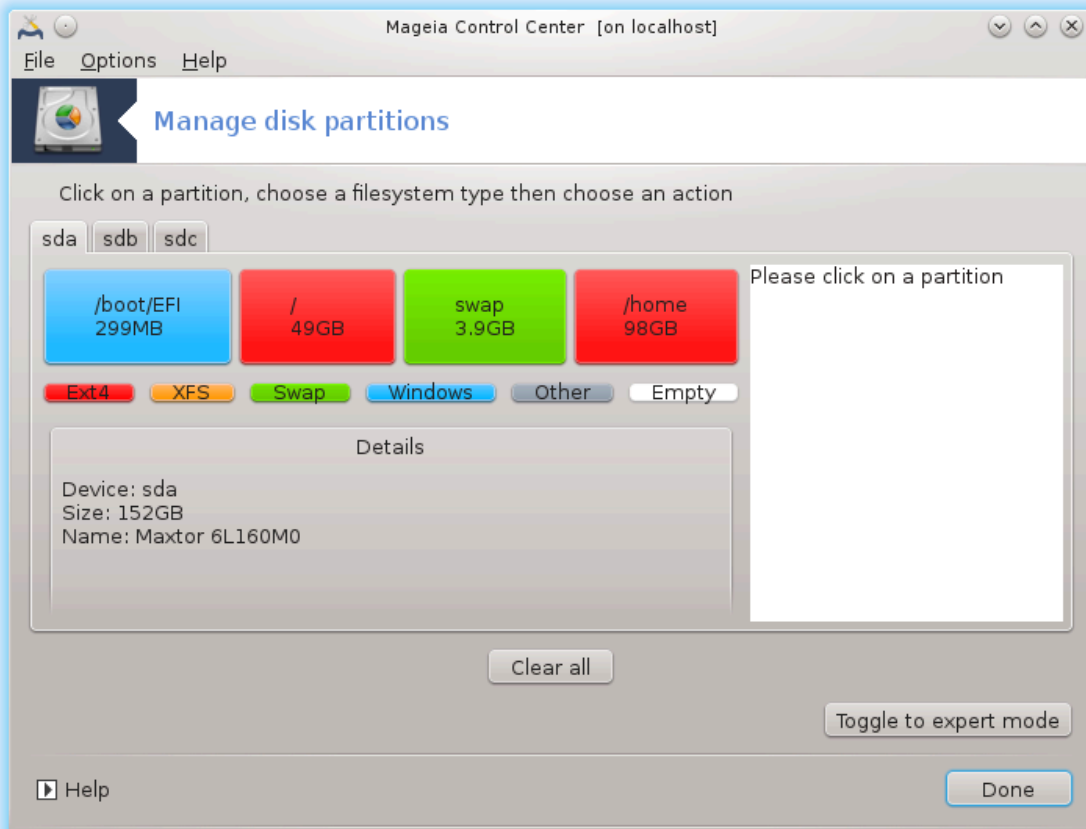
- Modify the layout of your disk(s) here. You can remove or create partitions, change the filesystem or size of a partition and even view their details before you start.
- There is a tab at the top for every detected hard disk (or other storage device, like a USB key). In the screenshot above there are two available devices: sda and sdb.
- For all other actions: click on the desired partition first. Then view it, or choose a filesystem and a mount point, resize it or wipe it. Εξπερτ μοδε provides more options such as to label (name) a partition, or to choose a partition type.
- Continue until you have adjusted everything to your satisfaction, then click Δοξε when you're ready.



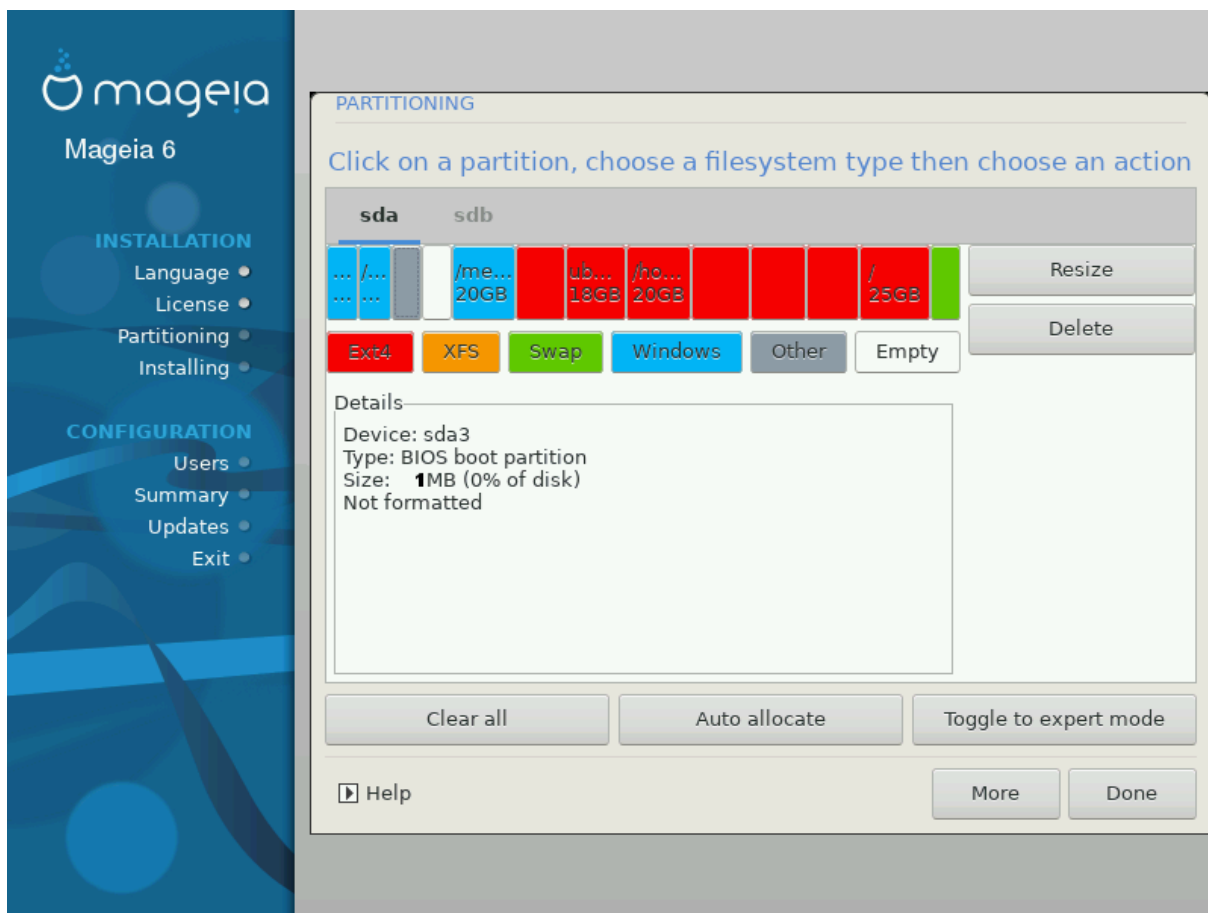
1. Take care with the *Χλεαρ αλλ* option, use it only if you are sure you want to wipe all partitions on the selected storage device.
2. If you wish to use encryption on your / partition you must ensure that you have a separate /boot partition. The encryption option for the /boot partition must NOT be set, otherwise your system will be unbootable.



- If you are installing Mageia on a UEFI system, check that an ESP (EFI System Partition) is present and correctly mounted on /boot/EFI. See Figure 1 below.
- If you are installing Mageia on a Legacy/GPT system, check that a BIOS boot partition is present and of the correct type. See Figure 2 below.

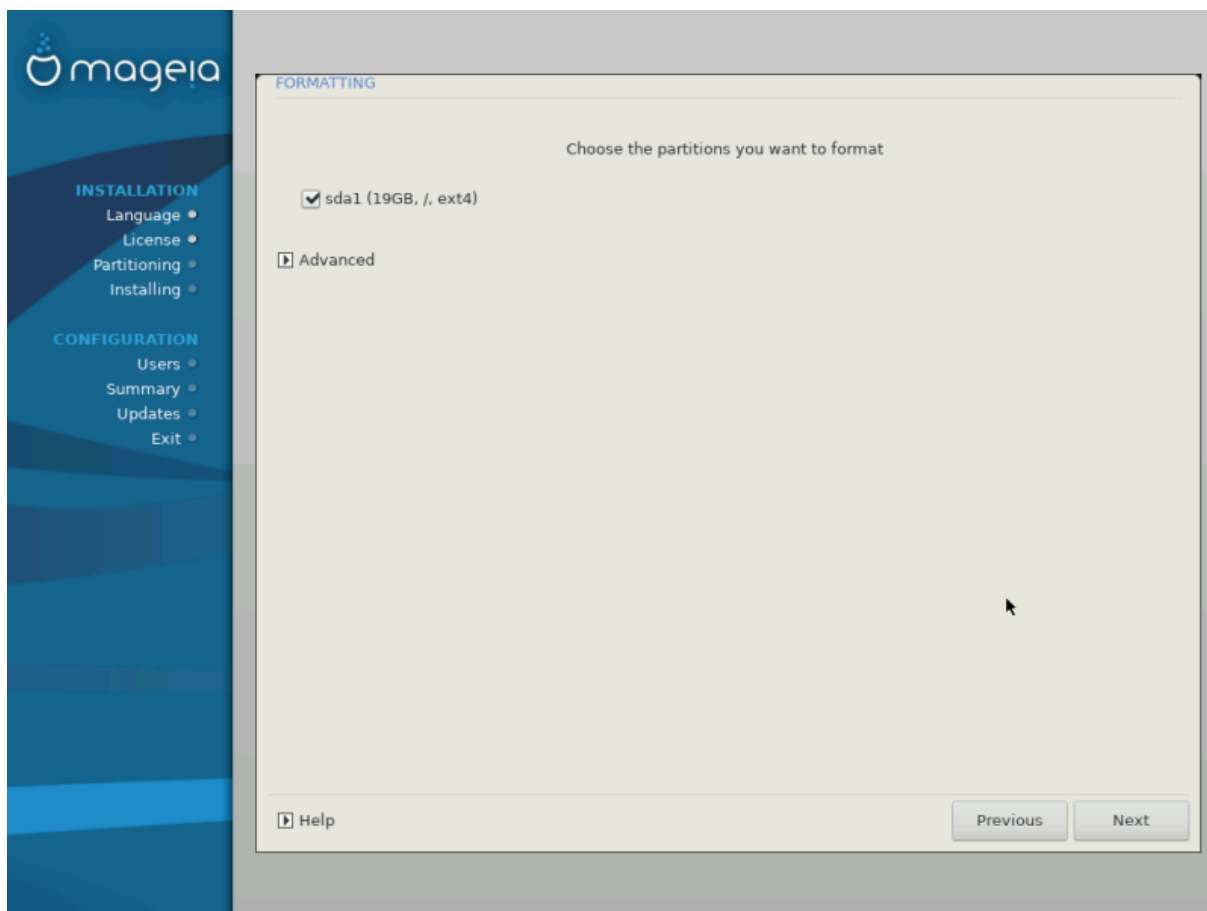


Obrázok 1. EFI System Partition



Obrázok 2. BIOS boot partition

8.5. Formátovanie



Here you can choose which partition(s) you wish to format. Any data on partitions not marked for formatting will be preserved.

Usually, at least the partitions that DrakX selected need to be formatted.

Click on [Αδυναχέδ](#) to choose the partitions you want to check for so-called [βαδ βλογκσ](#)



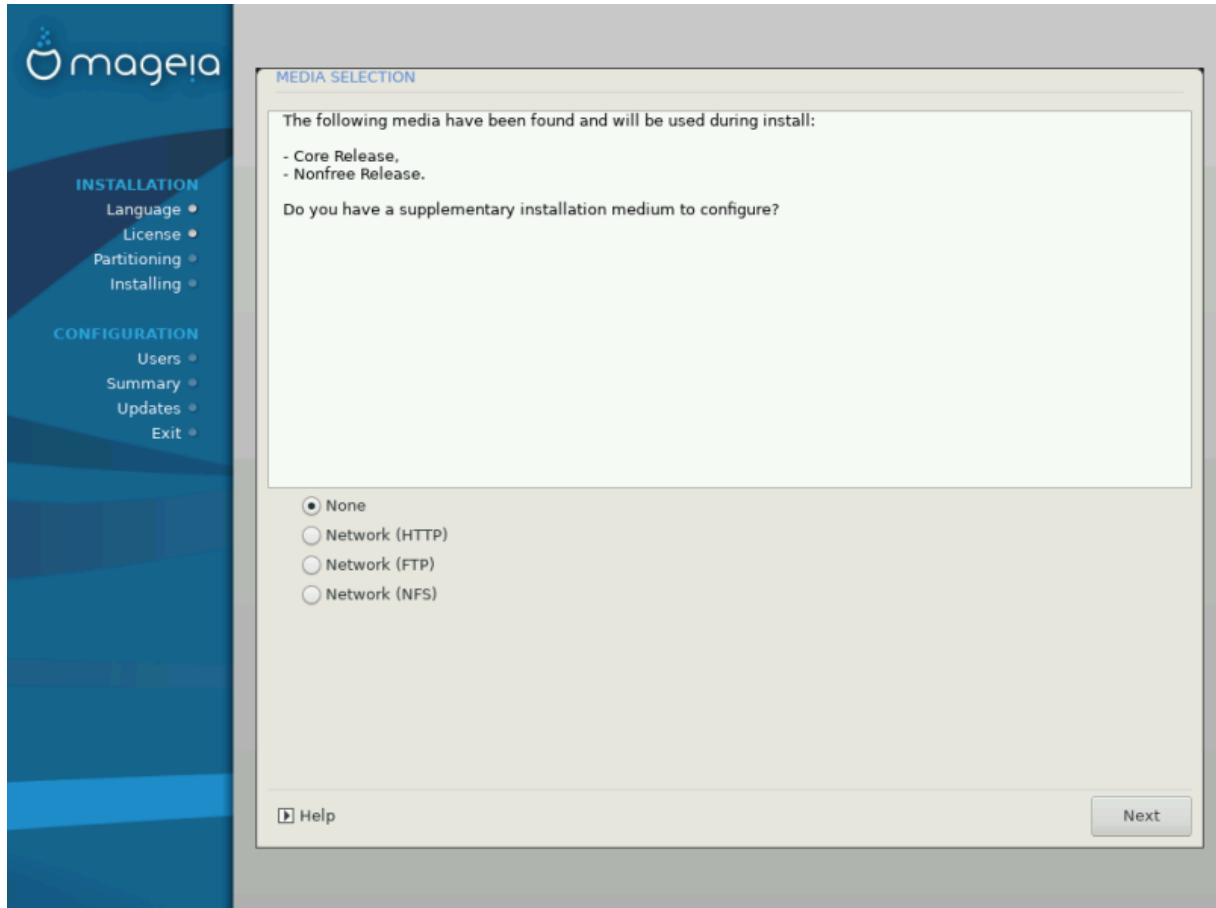
If you're not sure you have made the right choice, you can click on [Πρεπιουσ](#), again on [Πρεπιουσ](#) and then on [Χυστομ](#) to get back to the main screen, where you can choose to view details of your partitions.

When you are confident about the selections, click on [Νεξτ](#) to continue.

9. Software

9.1. Media Selection

9.1.1. Supplemental Installation Media



This screen shows you the list of already recognised repositories. You can add other sources for packages, like an optical-disc or a remote source. The source selection determines which packages will be available during the subsequent steps.

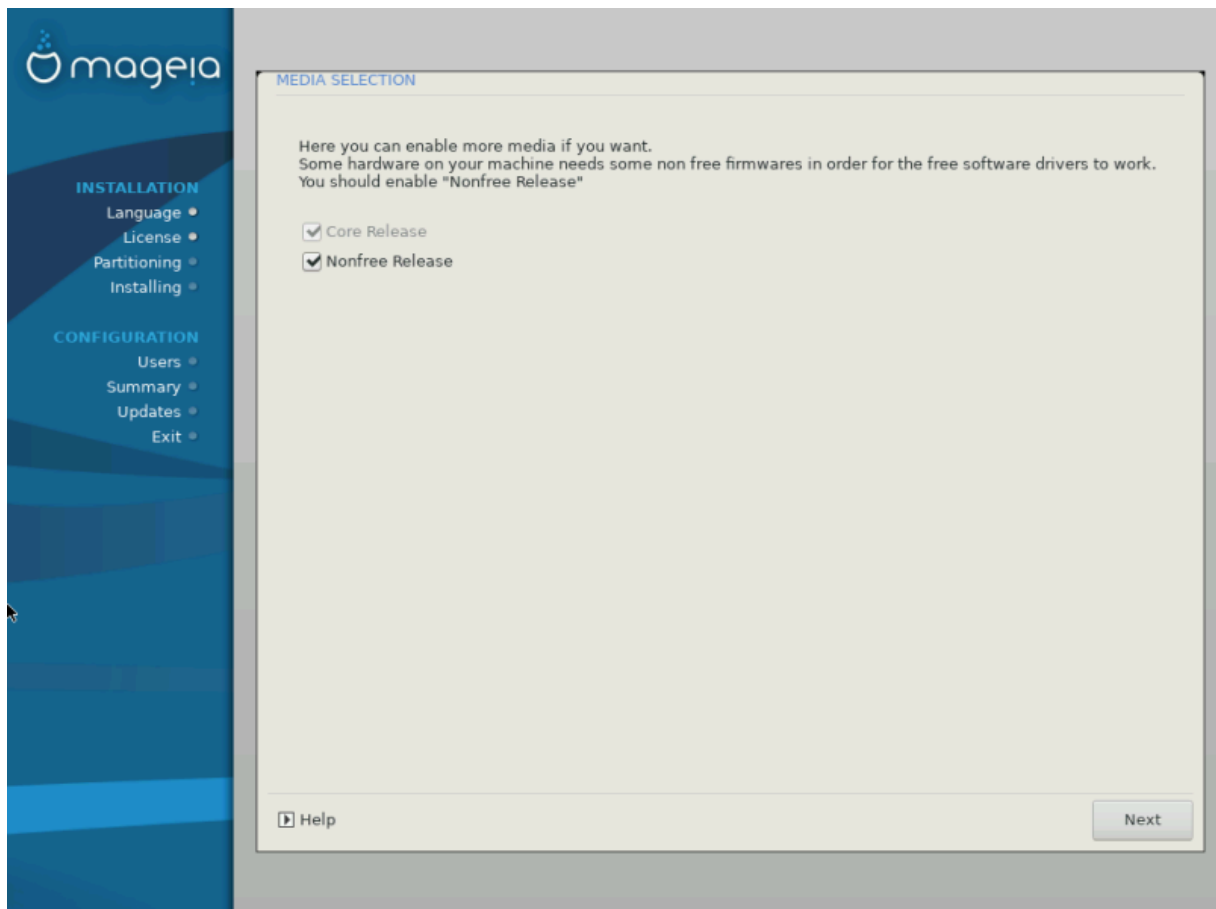
Pre sieťové zdroje, sú potrebné dva nasledujúce kroky:

1. Choosing and activating the network, if not already up.
2. Selecting a mirror or specifying a URL (very first entry). By selecting a mirror, you have access to the selection of all repositories managed by Mageia, like the *Νονφρεε*, the *Ταιντεδ* repositories and the *Υπατεσ*. With the URL, you can designate a specific repository or your own NFS installation.



If you are updating a 64-bit installation which may contain some 32-bit packages, it is advised to use this screen to add an online mirror by selecting one of the Network protocols here. The 64-bit DVD ISO only contains 64-bit and *νοαρχη* packages, it will not be able to update the 32-bit packages. However, after adding an online mirror, the installer will find the needed 32-bit packages there.

9.1.2. Available Media



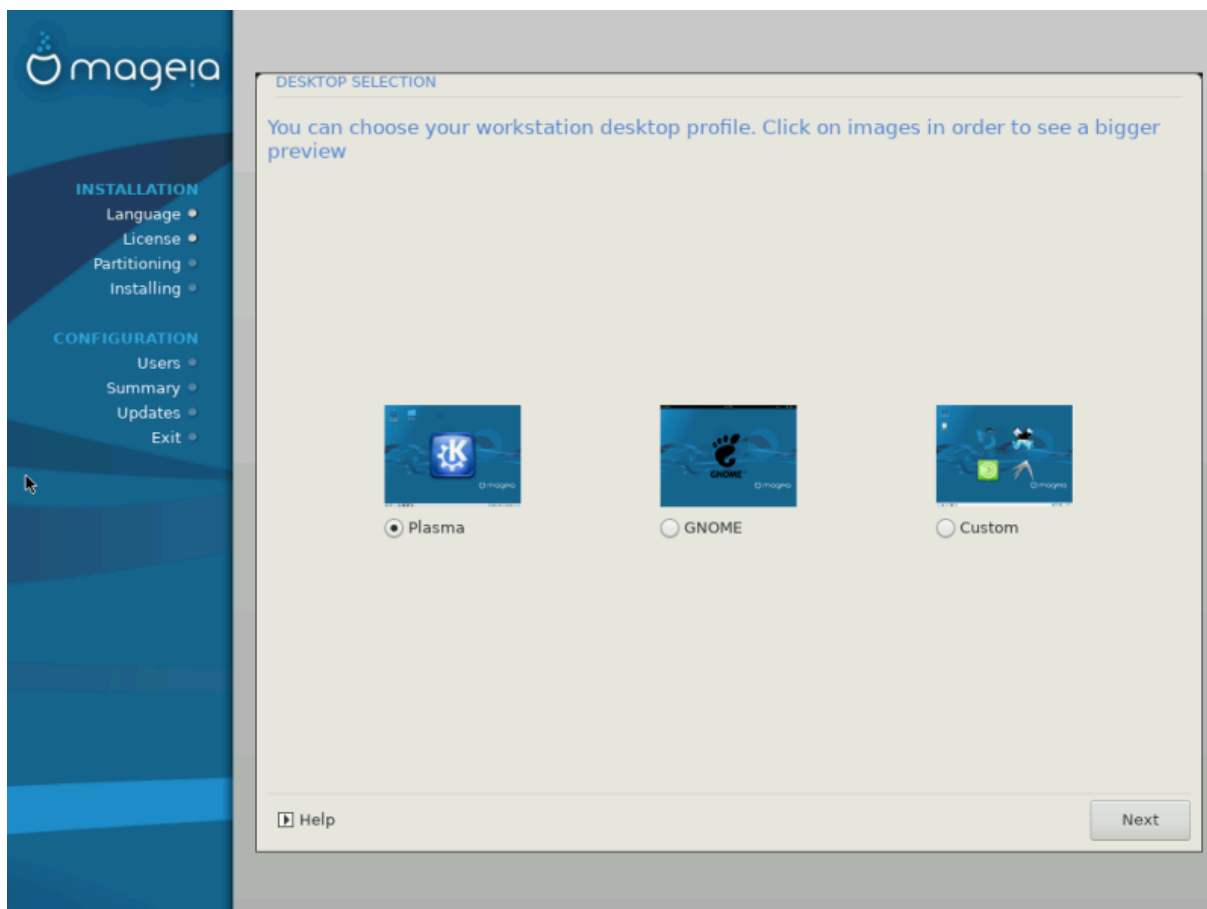
Tu máte zoznam dostupných repozitárov. Nie všetky repozitáre sú dostupné, podľa toho ktoré médium používate pre inštaláciu. Výber repozitárov určuje, ktoré balíčky budú dostupné na výber počas ďalších krokov.

- Repozitár pre $\theta\alpha\delta\rho\sigma$ nemôže byť vypnutý, keďže ten obsahuje základ distribúcie.
- The $\text{Nov}\phi\rho\rho\epsilon$ repository includes packages that are free-of-charge, i.e. Mageia may redistribute them, but they contain closed-source software (hence the name - Non-free). For example this repository includes nVidia and AMD graphics card proprietary drivers, firmware for various WiFi cards, etc.
- The $\text{T}\alpha\iota\nu\tau\epsilon\delta$ repository includes packages released under a free license. The main criteria for placing packages in this repository is that they may infringe patents and copyright laws in some countries, e.g. multimedia codecs needed to play various audio/video files; packages needed to play commercial video DVD's, etc.

9.2. Výber pracovného prostredia

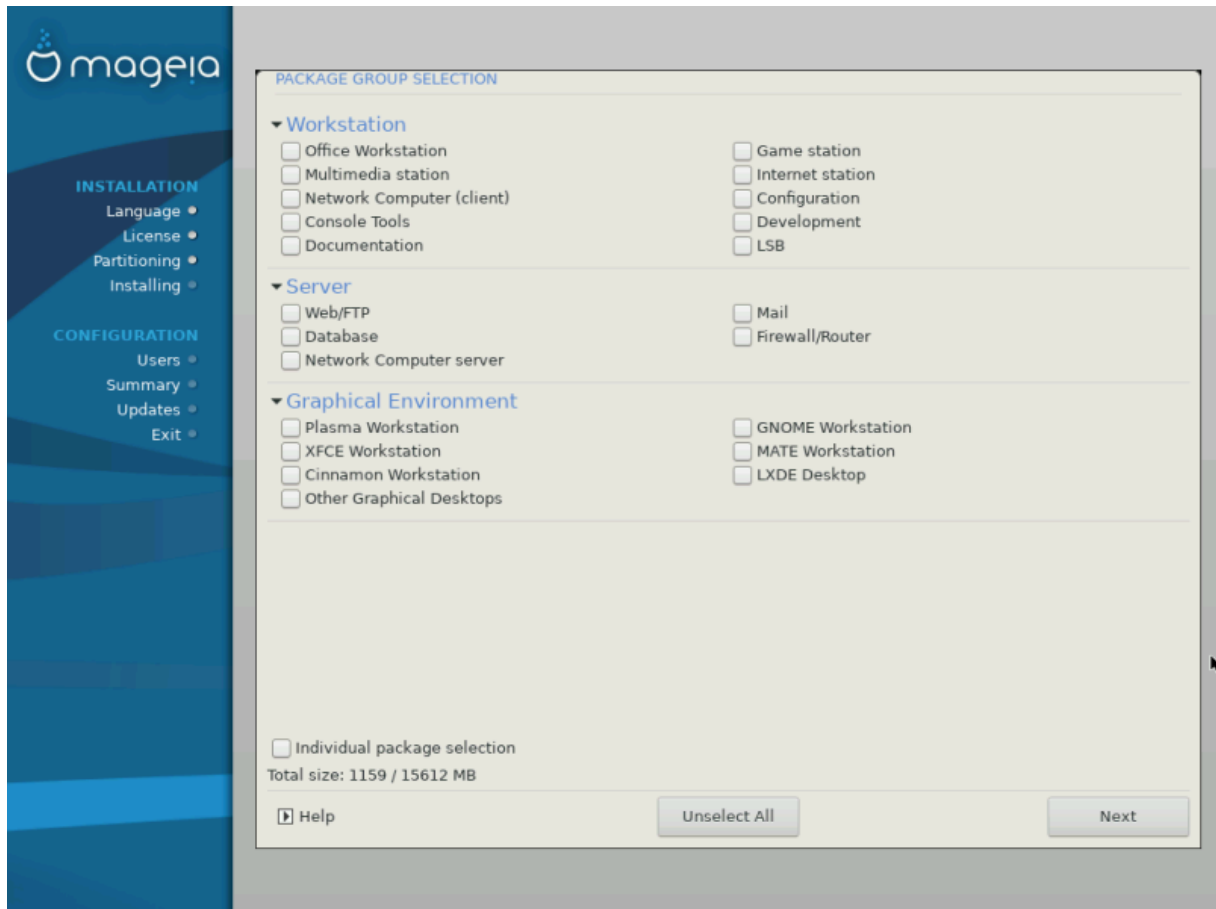
Some choices made here will open other screens with related options.

After the selection step(s), you will see a slideshow during the installation of required packages. The slideshow can be disabled by pressing the $\Delta\epsilon\tau\alpha\iota\lambda\sigma$ button.



- Choose whether you prefer to use the KDE Plasma or GNOME desktop environment. Both come with a full set of useful applications and tools.
- Select $\chi\upsilon\sigma\tau\omicron\mu$ if you do not wish to use either (or, actually use both) of these, or if you want to modify the default software choices for these desktop environments. The LXDE desktop, for instance, is lighter than the previous two, sporting less eye candy and having fewer packages installed by default.

9.3. Výber skupín balíkov



Packages are arranged into common groups, to make choosing what you need on your system a lot easier. The groups are fairly self explanatory, however more information about the content of each is available in tool-tips which become visible as the mouse is hovered over them.

- **Workstation**
- **Server**
- **Graphical Environment**
- **Individual Package Selection:** you can use this option to manually add or remove packages

See [Minimal Install](#) for instructions on how to do a minimal install (without or with X & IceWM).

9.4. Minimálna inštalácia

Minimal Installation is intended for those with specific uses in mind for Mageia, such as a server or a specialised workstation. You will probably use this option combined with the *Individual package selection* option to fine-tune your installation. See [Choose Packages Tree](#).

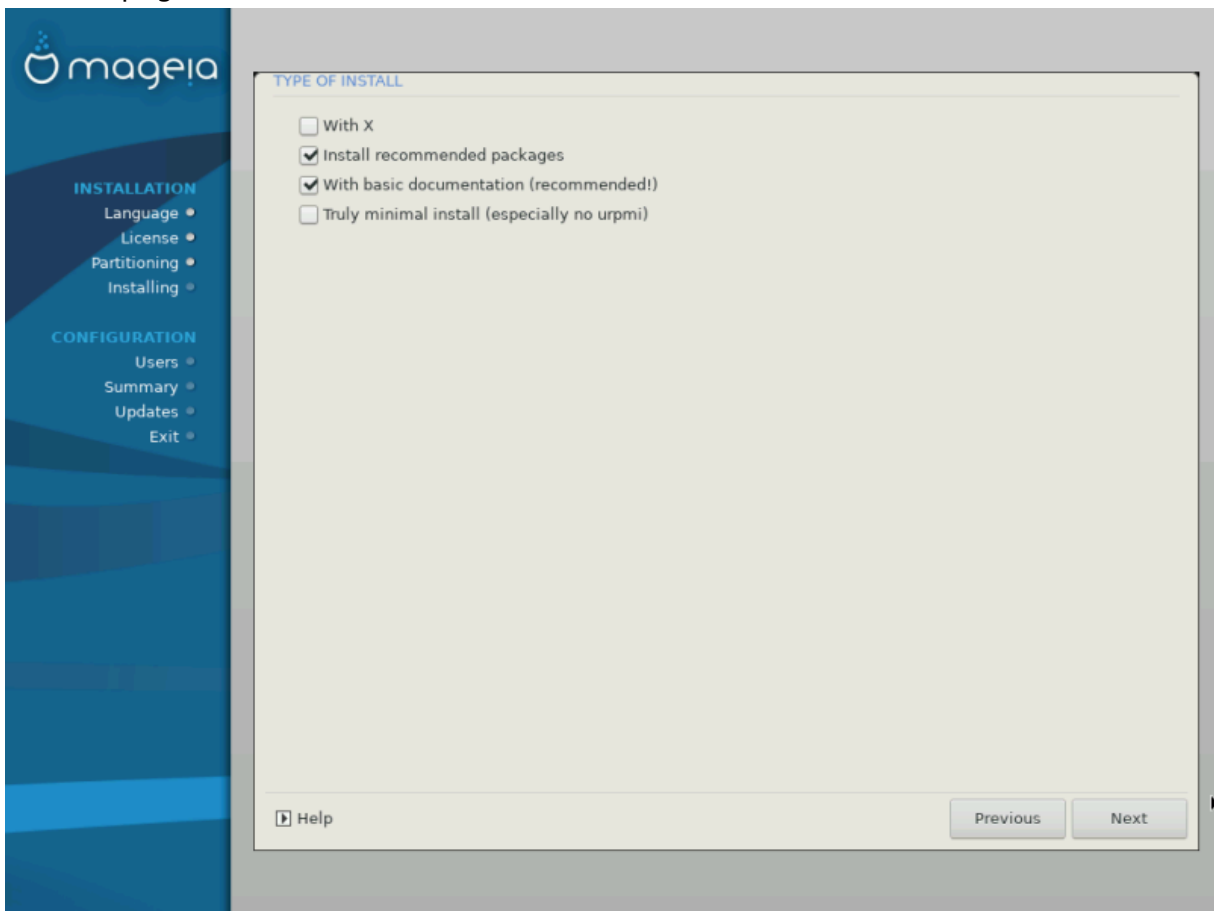
- You can choose a *Μινιμαλ Ινσταλλατιον* by de-selecting everything in the *Πακκαγε Γρουπ Σελεχτιον* screen, see [Choose Package Groups](#).

If desired, you can additionally tick the *Ινδιβιδυαλ παχκαγε σελεχτιον* option in the same screen.

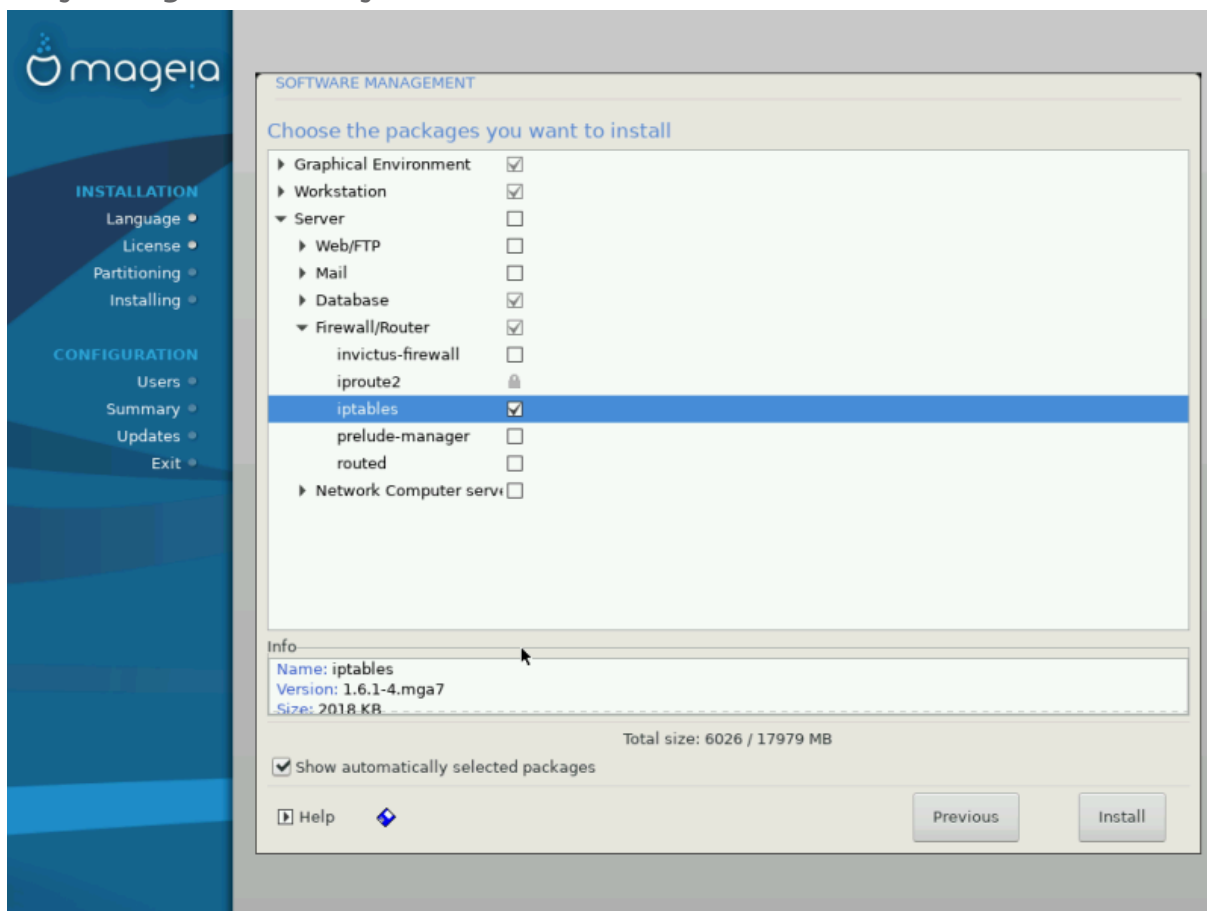
- If you choose this installation method, then the relevant screen (see screenshot below) will offer you a few useful extras to install, such as documentation and “X”.

If the *Ωιτη Ξ* option is selected, then IceWM (a lightweight desktop environment) will also be included.

The basic documentation is provided in the form of “man” and “info” pages. It contains the man pages from the [Linux Documentation Project](http://www.tldp.org/man-pages/man.html) [http://www.tldp.org/man-pages/man.html] and the [GNU coreutils](http://www.gnu.org/software/coreutils/manual/) [http://www.gnu.org/software/coreutils/manual/] info pages.



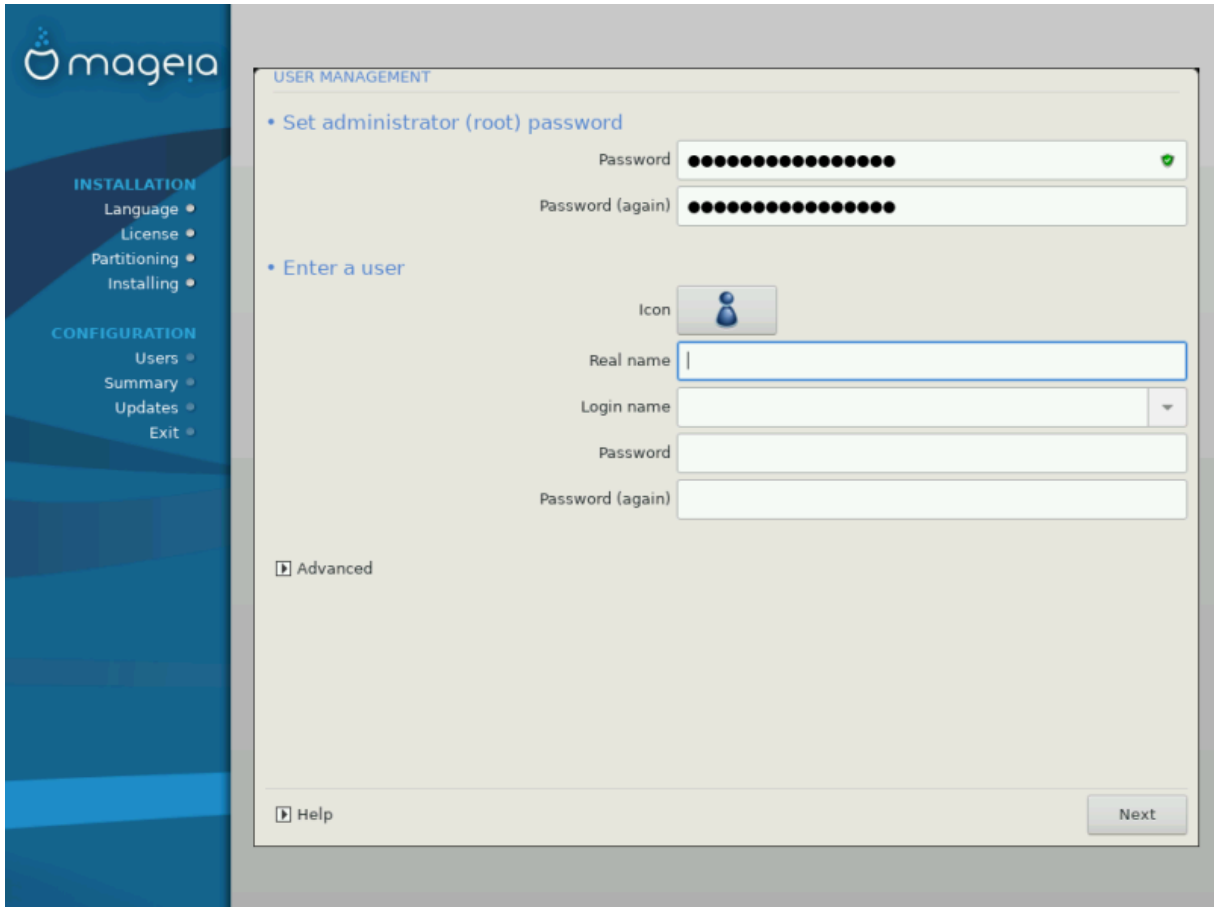
9.5. Výber jednotlivých balíčkov



Here you can add or remove any extra packages to customize your installation.

After having made your choice, you can click on the $\phi\lambda\omicron\pi\pi\psi$ icon at the bottom of the page to save your choice of packages (saving to a USB key works, too). You can then use this file to install the same packages on another system, by pressing the same button during install and choosing to load it.

10. User Management



10.1. Nastavenie správcovho (rootovho) hesla:

It is advisable for all Mageia installations to set a superuser (Administrator) password, usually called the `root` password in Linux. As you type a password into the top box a shield will change from red-to-yellow-to-green depending on the strength of the password. A green shield shows you are using a strong password. You need to repeat the same password in the box underneath, to check that the first entry was not mistyped.



All passwords are case-sensitive. It is best to use a mixture of letters (upper and lower case), numbers and other characters in a password.

10.2. Pridať používateľa

Add a User here. A regular user has fewer privileges than the superuser (root), but enough to use the Internet, office applications or play games and anything else the average user might use a computer for.

- **Icon**

Click on this button if you want to change the user's icon

- **Real Name**

Insert the user's real name into this text box

- **Login Name**

Enter the user login name or let DrakX use a version of the user's real name. **The login name is case-sensitive.**

- **Password**

Type in the user password. There is a shield at the end of the text box that indicates the strength of the password. (See also [Poznámka](#))

Password (again): Retype the user password. DrakX will check that you have not mistyped the password.



Any users added while installing Mageia, will have a home directory that is both read and write protected (umask=0027)

You can add any extra needed users in the Χονφιγυρατιον – Συμμαρψ step during the install. Choose Υσερ μαναγεμεντ.

Prístupové oprávnenia možno meniť aj po inštalácii.

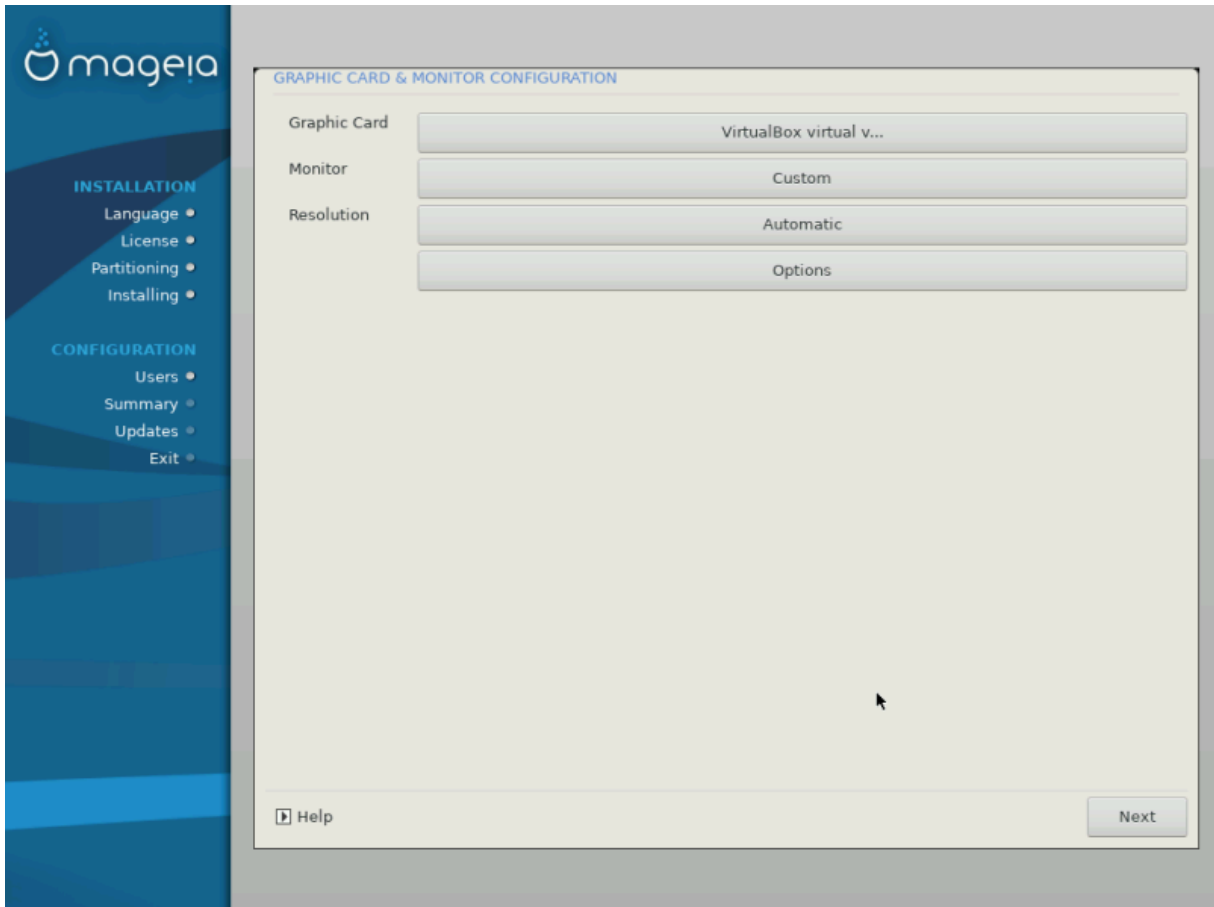
10.3. User Management (advanced)

The Αδπαυχεδ option allows you to edit further settings for the user you are adding.

- Σηελλ: This drop-down list allows you to change the shell available to any user you added in the previous screen. Options are Bash, Dash and Sh
- Υσερ ΙΔ: Here you can set the user ID for any user you added in the previous screen. If you are unsure what the purpose of this is, then leave it blank.
- Γρουπ ΙΔ: This lets you set the group ID. Again, if unsure, leave it blank.

11. Graphical Configuration

11.1. Nastavenie grafickej karty a monitoru



No matter which graphical environment (also known as desktop environment) you choose for this install of Mageia, they are all based on a graphical user interface system called X Window System, or simply “X”. So in order for KDE Plasma, GNOME, LXDE or any other graphical environment to work well, the following “X” settings need to be correct.

Choose the appropriate settings manually if you think the details are incorrect, or if none are shown.

- **Graphic Card**

If you need to, you can select a specific card from this expandable list. See [Oddiel 11.2, “Výber X Servera \(Konfigurácia vašej grafickej karty\)”](#).

- **Monitor**

You can choose Plug 'n Play, if applicable, or choose your monitor from the $\xi\epsilon\nu\delta\omicron\rho$ or $\Gamma\epsilon\nu\epsilon\rho\tau\chi$ lists. Choose $\chi\upsilon\sigma\tau\omicron\mu$ if you prefer to manually set the horizontal and vertical refresh rates of your monitor. See [Oddiel 11.3, “Výber vášho monitoru”](#).

- **Resolution**

The resolution and color depth of your monitor can be set here.

- **Test**

The test button does not always appear during install. If the option is there, and you test your settings, you should be asked to confirm that your settings are correct. If you answer Ψεσ, the settings will be kept. If you don't see anything, you'll return to the configuration screen and be able to reconfigure everything until the test result is satisfactory. If the test option is not available, then make sure your settings are on the safe side.

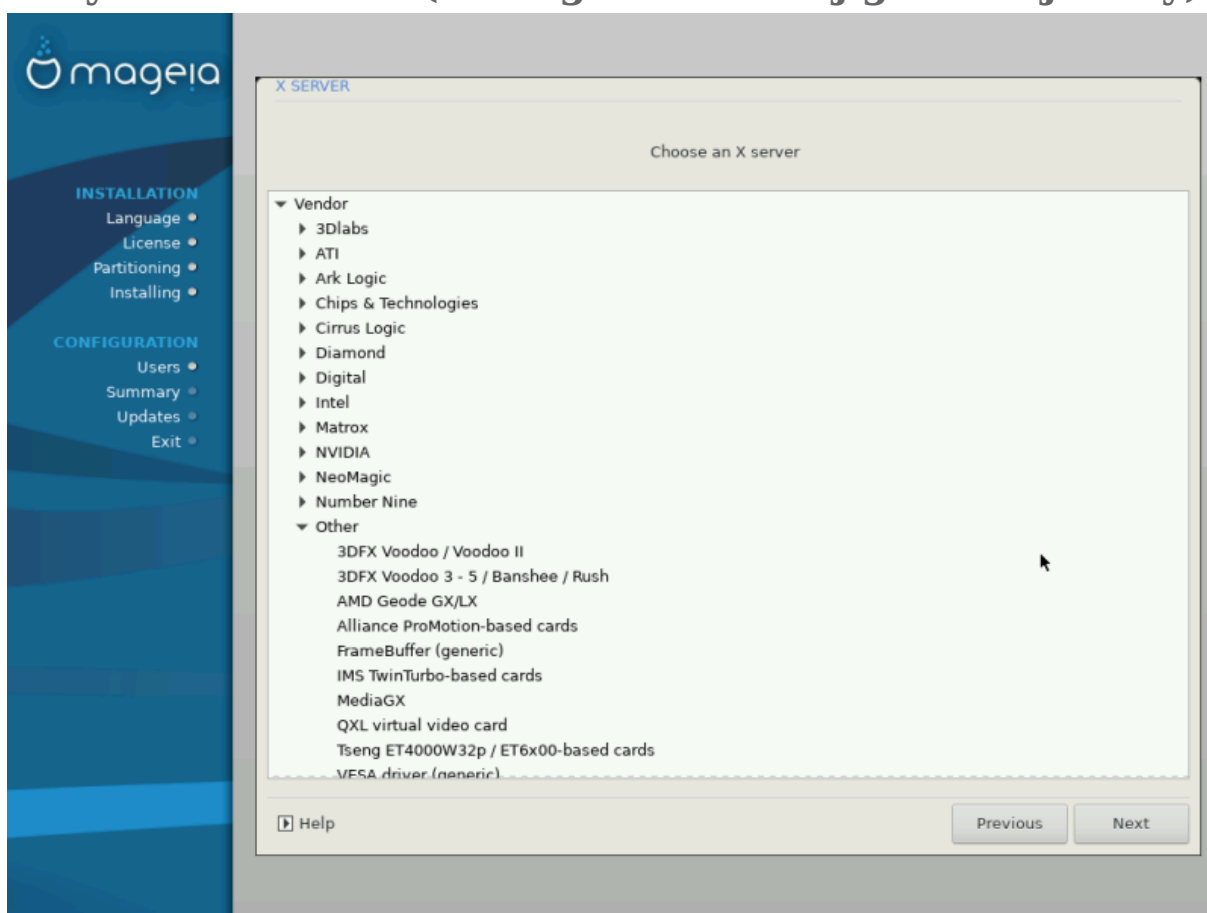
- **Options**

Here you can choose to enable or disable various options.



There is a risk of damaging a monitor if you choose refresh rates that are outside the frequency range of that monitor. This applies to older CRT displays: modern monitors will reject an unsupported frequency and normally enter standby mode.

11.2. Výber X Servera (Konfigurácia vašej grafickej karty)



DrakX má veľmi rozsiahlu databázu grafických kariet a zvyčajne správne identifikuje video zariadenie.

Ak vaša grafická karta nie je správne rozpoznaná inštalačným programom a vy viete, akú máte kartu, môžete ju vybrať zo stromu:

- Vendor
- then the make of your card

- and the model of card

If you cannot find your card in the vendor lists (because it's not yet in the database or it's an older card) you may find a suitable driver in the $\Xi\omicron\pi\gamma$ category, which provides more than 40 generic and open source video card drivers. If you still can't find a specific driver for your card there is the option of using the VESA driver which provides basic capabilities.



Be aware that if you select an incompatible driver you may only have access to the $\chi\omicron\mu\mu\alpha\nu\delta$ Λ ινε $\text{I}\nu\tau\epsilon\rho\phi\alpha\chi\epsilon$

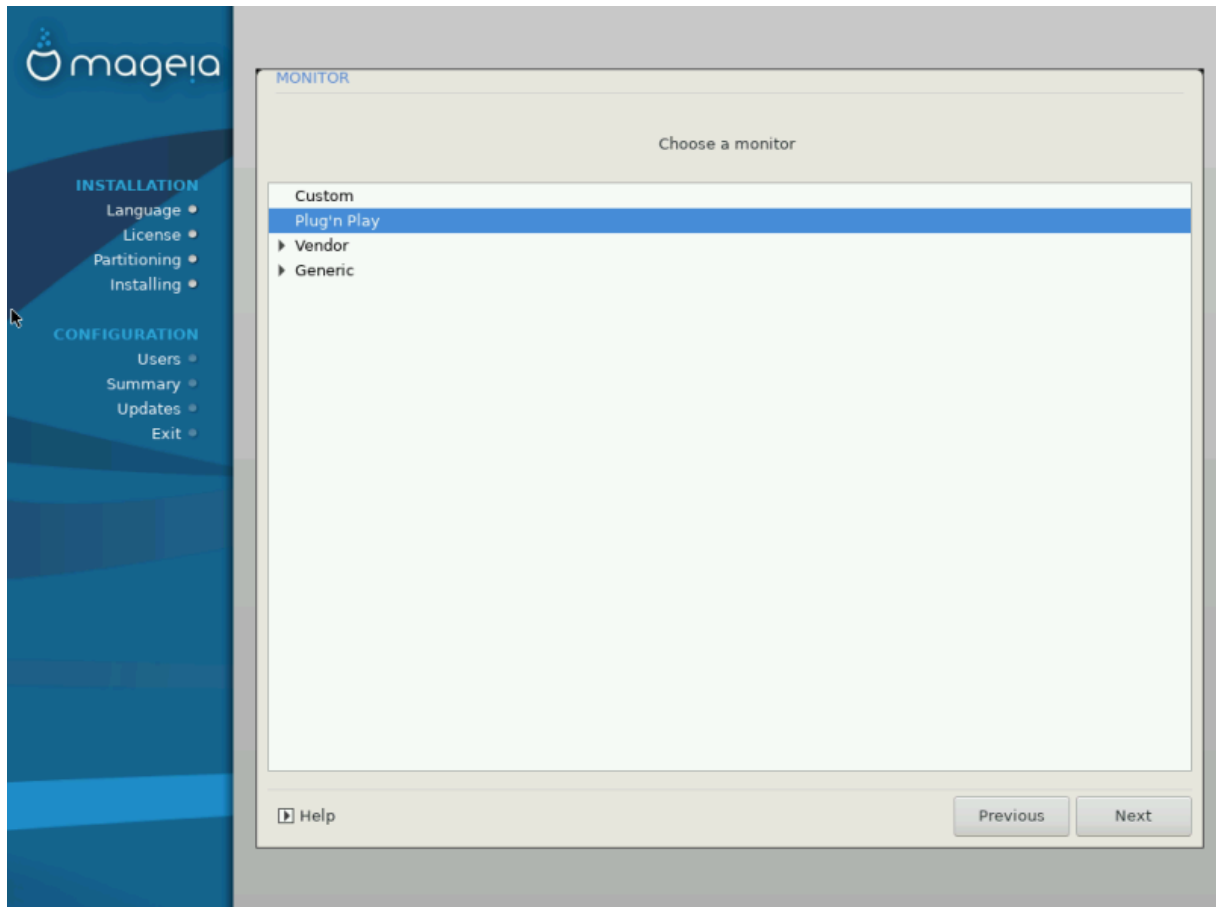
Some video card manufacturers provide proprietary drivers for Linux which may only be available in the $\text{N}\omicron\nu\phi\rho\epsilon\epsilon$ repository and in some cases only from the card manufacturers' websites. The $\text{N}\omicron\nu\phi\rho\epsilon\epsilon$ repository needs to be explicitly enabled to access them. If you didn't enable it previously, you should do this after your first reboot.

11.3. Výber vášho monitoru

DrakX má veľmi rozsiahlu databázu monitorov a zvyčajne správne identifikuje ten váš.



Selecting a monitor with different characteristics could damage your monitor or video hardware. Please don't try something without knowing what you are doing. If in doubt you should consult your monitor documentation.



- Vlastný výber** This option allows you to set two critical parameters: the vertical refresh rate and the horizontal sync rate. Vertical refresh determines how often the screen is refreshed and horizontal sync is the rate at which scan lines are displayed.
- Je **ϵE#MI Δ™ΛE#IT** aby ste nezvolili typ monitora s rozsahom synchronizácie, ktorý presahuje schopnosti vášho monitora: mohli by ste tým poškodiť svoj monitor. Ak ste v pochybnostiach, vyberte si konzervatívne nastavenie a preverte ho v dokumentácii k vášmu monitoru.
- Plug'n Play** This is the default option and automatically tries to determine the monitor type from the monitor database.
- Vendor** Ak inštalátor korektno nerozpoznal váš monitor a vy viete, ktorý máte, môžete si ho zvoliť zo stromu pomocou výberu:
- Manufacturer
 - Monitor model
- Generic** Selecting this group will list nearly 30 display configurations such as 1024x768 @ 60Hz and includes flat-panel displays as used in laptops. This is often a good monitor selection group if you need to use the VESA card driver when your video hardware cannot be determined automatically. Once again it may be wise to be conservative in your selections.

12. Bootloader

12.1. Grub2

Grub2 on Legacy MBR/GPT systems

- GRUB2 (with or without graphical menu) will be used exclusively as the bootloader for a Legacy/MBR or Legacy/GPT system.
- By default, a new bootloader will be written into either the MBR (Master Boot Record) of your first hard drive or in the BIOS boot partition.

Grub2-efi on UEFI systems

- GRUB2-efi will be used exclusively as the bootloader for a UEFI system.
- By default, a new bootloader (Grub2-efi) will be written into the ESP (EFI System Partition).

If there are already UEFI-based operating systems installed on your computer (Windows 8 for example), the Mageia installer will detect the existing ESP created by Windows and add grub2-efi to it. If no ESP exists, then one will be created. Although it is possible to have several ESPs, only one is required, whatever the number of operating systems you have.

12.2. Bootloader Setup

12.2.1. Hlavné parametre zavádzača

mageia
Mageia 6

INSTALLATION

- Language •
- License •
- Partitioning •
- Installing •

CONFIGURATION

- Users •
- Summary •
- Updates •
- Exit •

BOOTLOADER MAIN OPTIONS

- **Bootloader**
Bootloader to use: GRUB2 with graphical menu
Boot device: /dev/sda (Maxtor 6L160M0)
- **Main options**
Delay before booting default image: 10
- **Security**
Password:
Password (again):

Advanced

Help

Previous Next

- **Bootloader to use**

This feature is only available to Legacy MBR/BIOS systems. Users of UEFI systems will not see this option here.

- **Boot device**

Don't change this unless you really know what you are doing

- **Delay before booting the default image**

This text box lets you set a delay, in seconds, before the default operating system is started up.

- **Security**

This allows you to set a password for the bootloader. This means a username and password will be required when booting in order to select a booting entry or change settings. This is optional, and most people are not likely to have a need for it. The username is root and the password is the one chosen hereafter.

- **Password**

Choose a password for the bootloader (optional)

- **Password (again)**

Retype the password and DrakX will check that it matches with the one set above

Αδπανχεδ

- Εναβλε ΑΧΠΙ

ACPI (Advanced Configuration and Power Interface) is a standard for power management. It can save energy by stopping unused devices. Deselecting it could be useful if, for example, your computer does not support ACPI or if you think the ACPI implementation might cause some problems (for instance random reboots or system lockups).

- Εναβλε ΣΜΠΙ

This option enables/disables symmetric multiprocessing for multi-core processors

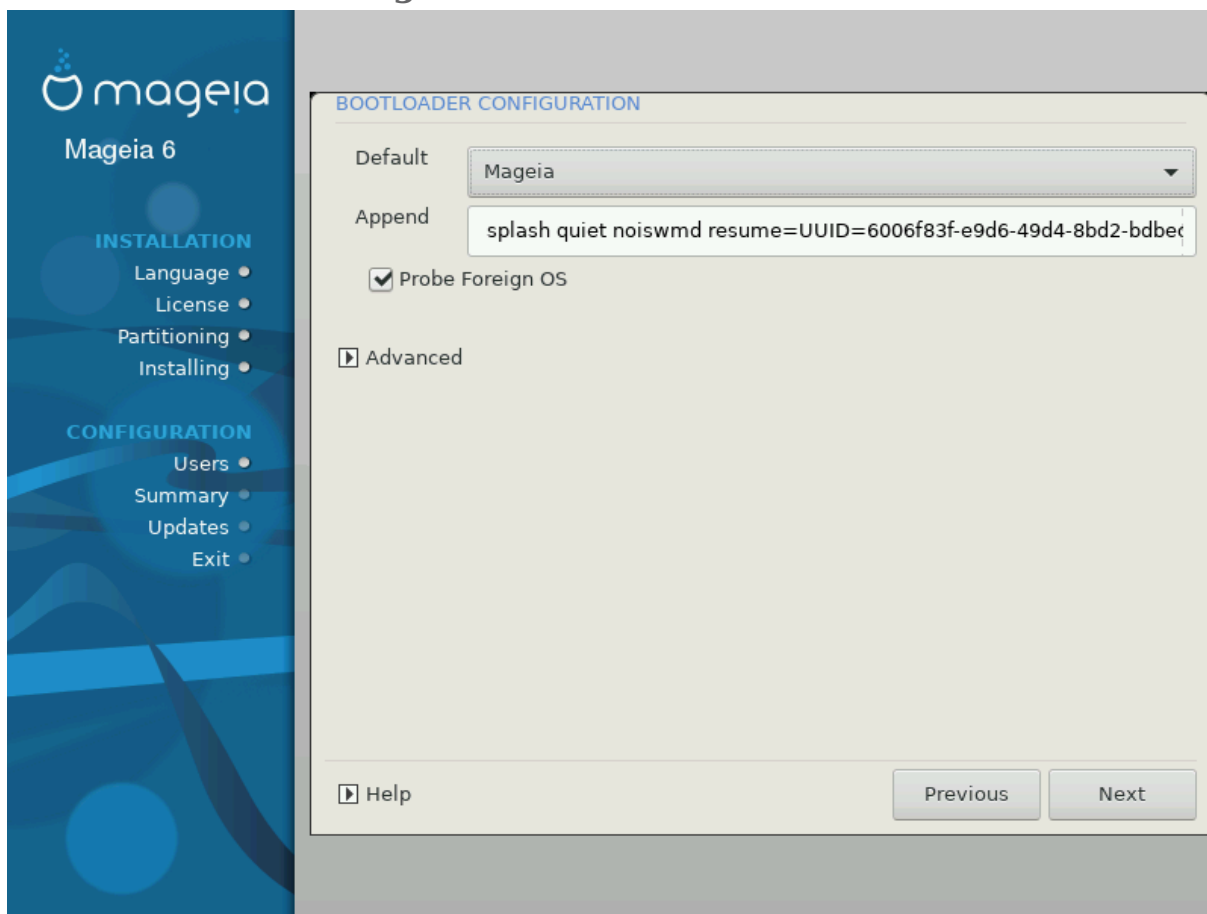
- Εναβλε ΑΠΙΧ

Enabling this gives the operating system access to the Advanced Programmable Interrupt Controller. APIC devices permit more complex priority models, and Advanced IRQ (Interrupt Request) management.

- Εναβλε Λοχαλ ΑΠΙΧ

Here you can set Local APIC, which manages all external interrupts for a specific processor in an SMP system

12.2.2. Bootloader Configuration



- **Default**

The operating system to be started up by default.

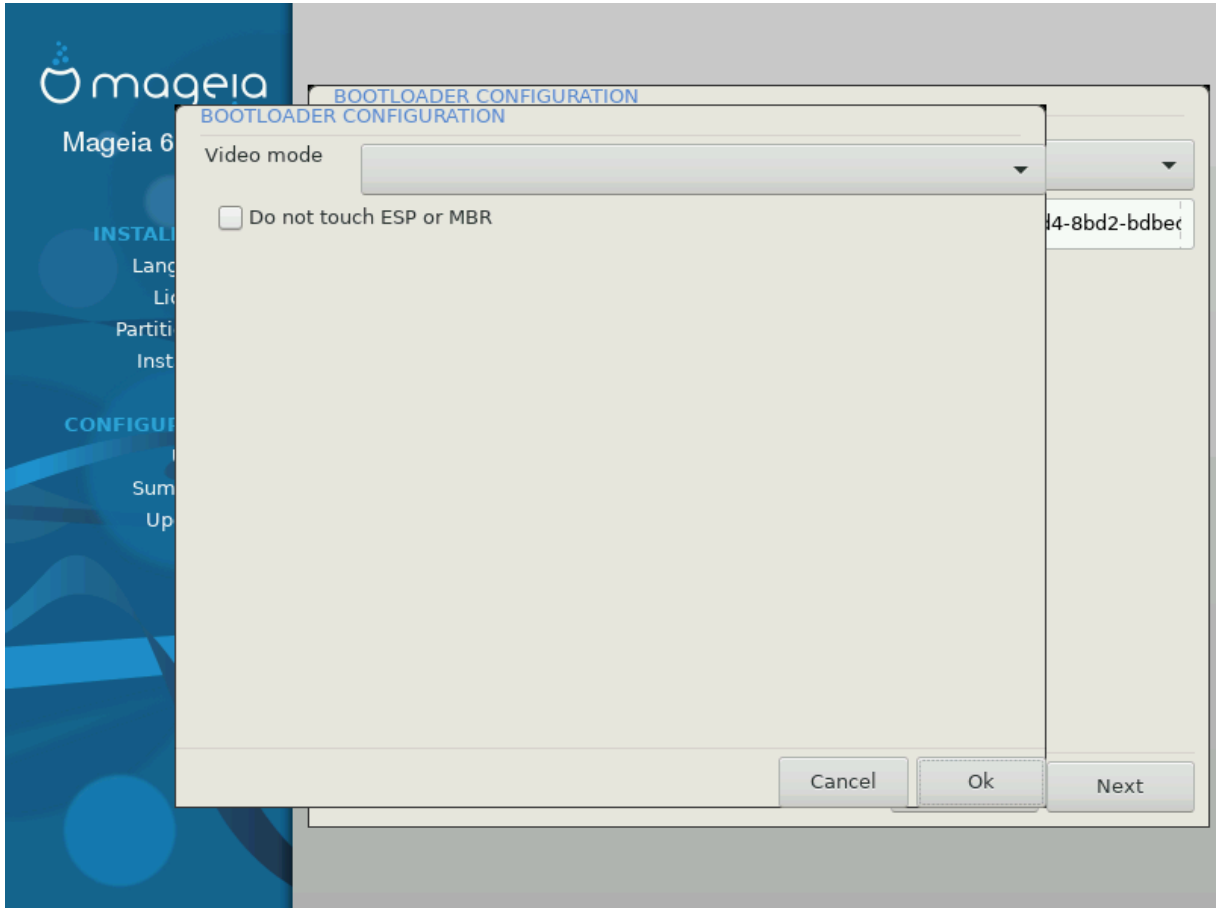
- **Append**

This option lets you pass information to the kernel or tell the kernel to give you more information as it boots.

- **Probe foreign OS**

If you already have other operating systems installed, Mageia attempts to add them to your new Mageia boot menu. If you don't want this behaviour, then untick the Probe Foreign OS option.

Αδωνχεδ

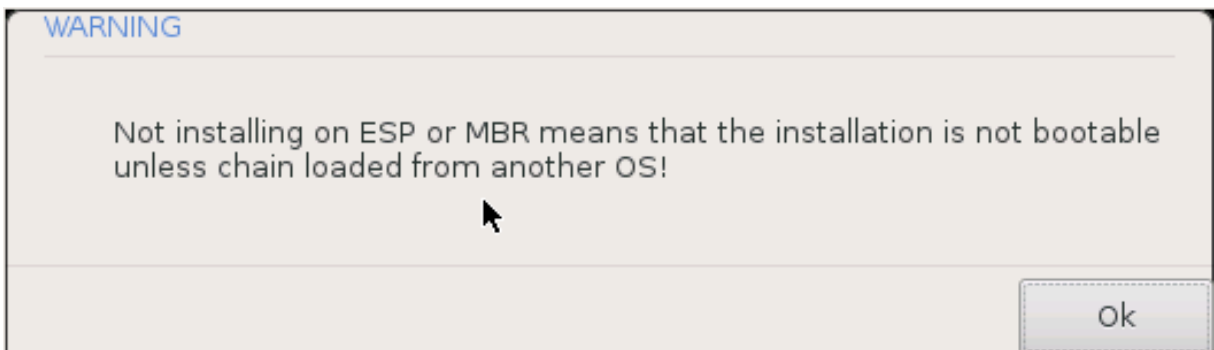


- ვიდეო მოდები

This sets the screen size and colour depth to be used by the boot menu. If you click the down-triangle you will be offered other size and colour depth options.

- დონე არ შეეხება ESP-ს ან MBR-ს

Select this option if you don't want a bootable Mageia, but would rather chain-load it from another OS. You will get a warning that the bootloader is missing. Click **Ok** if you are sure you understand the implications, and wish to proceed.



12.3. Other Options

12.3.1. Použitie už existujúceho zavádzača

The exact procedure for adding Mageia to an existing bootloader is beyond the scope of this documentation. However in most cases it will involve running the relevant bootloader installation program, which should detect Mageia and automatically add an entry for it in the bootloader menu. See the documentation for the relevant operating system.

12.3.2. Installing Without a Bootloader

While you can opt to install Mageia without a bootloader (see section 2.1 Advanced), this is not recommended unless you absolutely know what you are doing, as without some form of bootloader your operating system will be unable to start.

12.3.3. Pridanie alebo úprava položiek Ponuky na zavedenie systému

To do this you need to manually edit `/boot/grub2/custom.cfg` or use the software **grub-customizer** tool instead (available in the Mageia repositories).



For more information, see: https://wiki.mageia.org/en/Grub2-efi_and_Mageia

13. Configuration Summary



DrakX presents a proposal for the configuration of your system depending on the choices you made and on the hardware detected. You can check the settings here and change them if you want by pressing $\chi\omicron\nu\phi\iota\gamma\upsilon\rho\epsilon$.



As a general rule, it is recommended that you accept the default settings unless:

- there are known issues with a default setting
- the default setting has already been tried and it fails
- some other factor mentioned in the detailed sections below is an issue

13.1. Parametre systému

- **Timezone**

DrakX selects a timezone for you, depending on your preferred language. You can change it if needed. See also [Configure Timezone](#)

- **Country / Region**

If the selected country is wrong, it is very important that you correct the setting. See [Select Country](#)

- **Bootloader**

DrakX proposal for the bootloader setting

Do not change anything, unless you know how to configure GRUB2. For more information, see [Bootloader](#)

- **User management**

You can add extra users here. They will each be allocated their own /home directories.

- **Services**

System services refer to those small programs which run in the background (daemons). This tool allows you to enable or disable certain processes.

You should check carefully before changing anything here - a mistake may prevent your computer from operating correctly. For more information, see [Configure Services](#)

13.2. Hardvérové parametre

- **Keyboard**

Configure your keyboard layout according to your location, language and type of keyboard.



If you notice a wrong keyboard layout and want to change it, keep in mind that your passwords are going to change too.

- **Mouse**

Tu môžete pridávať alebo konfigurovať ďalšie ukazovacie zariadenia, tablety, trackbally atď.

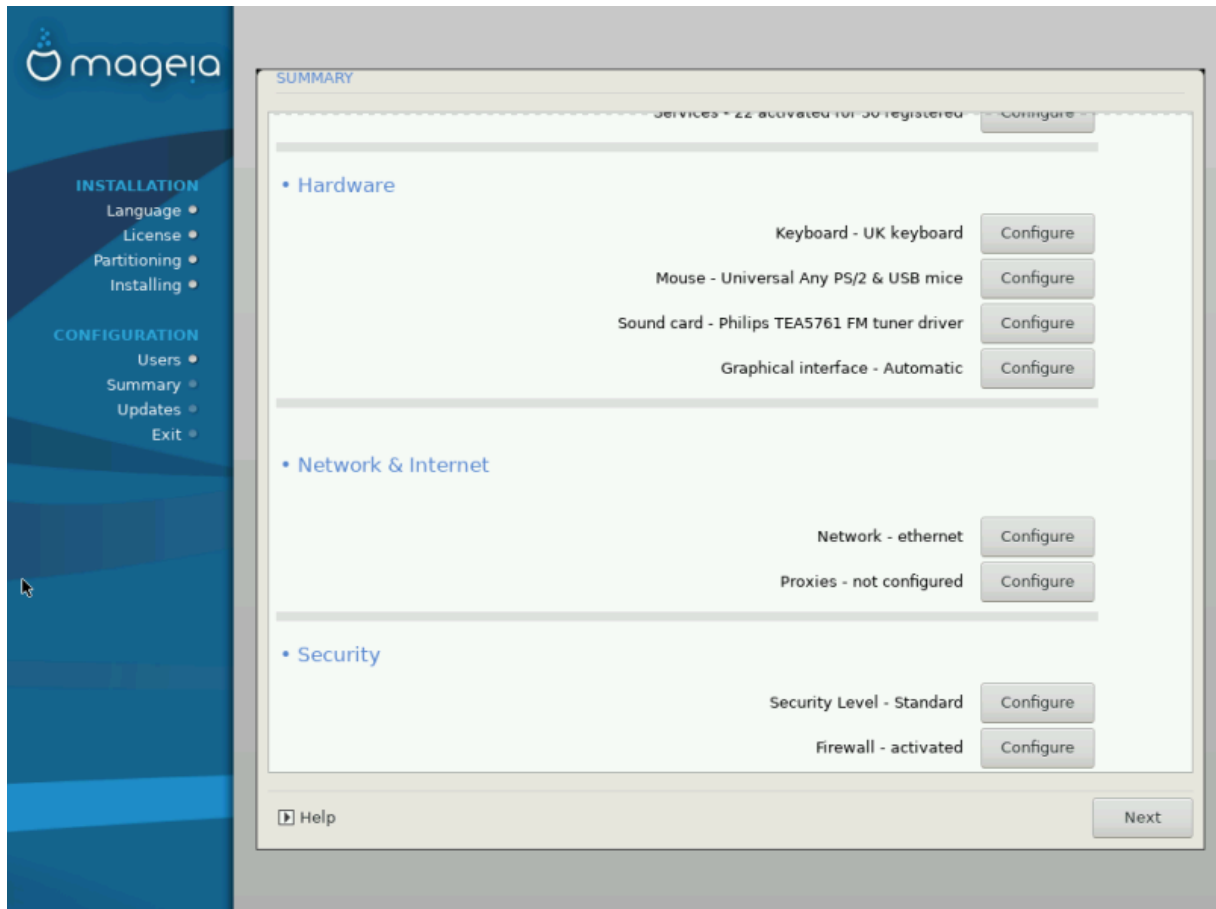
- **Sound card**

The installer will use the default driver if one is available.

If there is no actual default driver for your sound card, there may be other possible alternative drivers available to choose from. If this is the case, but you think the installer has not made the most appropriate choice, you can click on *Αδυναχέδ* to manually specify a driver.

- **Graphical interface**

This section allows you to configure your graphics card(s) and displays. For more information, see [Oddiel 11.1, "Nastavenie grafickej karty a monitoru"](#)



13.3. Nastavenia siete a internetu

- **Network**

You can configure your network here, but for network cards with non-free drivers it is better to do that after reboot, using the Mageia Control Center, if you have not yet enabled the *Novýpεε* media repositories.



When you add a network card, do not forget to set your firewall to monitor that interface as well.

- **Proxies**

A Proxy Server acts as an intermediary between your computer and the wider Internet. This section allows you to configure your computer to utilize a proxy service.

You may need to consult your systems administrator to obtain the parameters you need to enter here.

13.4. Bezpečnosť

- **Security Level**

The Security level for your computer, in most cases the default setting (Standard) is adequate for general use. Select the option which best suits your usage.

- **Firewall**

The firewall allows you to manage which network connections are allowed on your computer. The safe and secure default is to allow ZERO inbound connections. This does not stop you connecting outbound and using your computer normally.

Please be aware that the Internet is a high risk network where there are continuous attempts to probe and attack systems. Even seemingly “safe” connections such as ICMP (for ping) have been used as covert data channels for exfiltrating data by malicious persons.

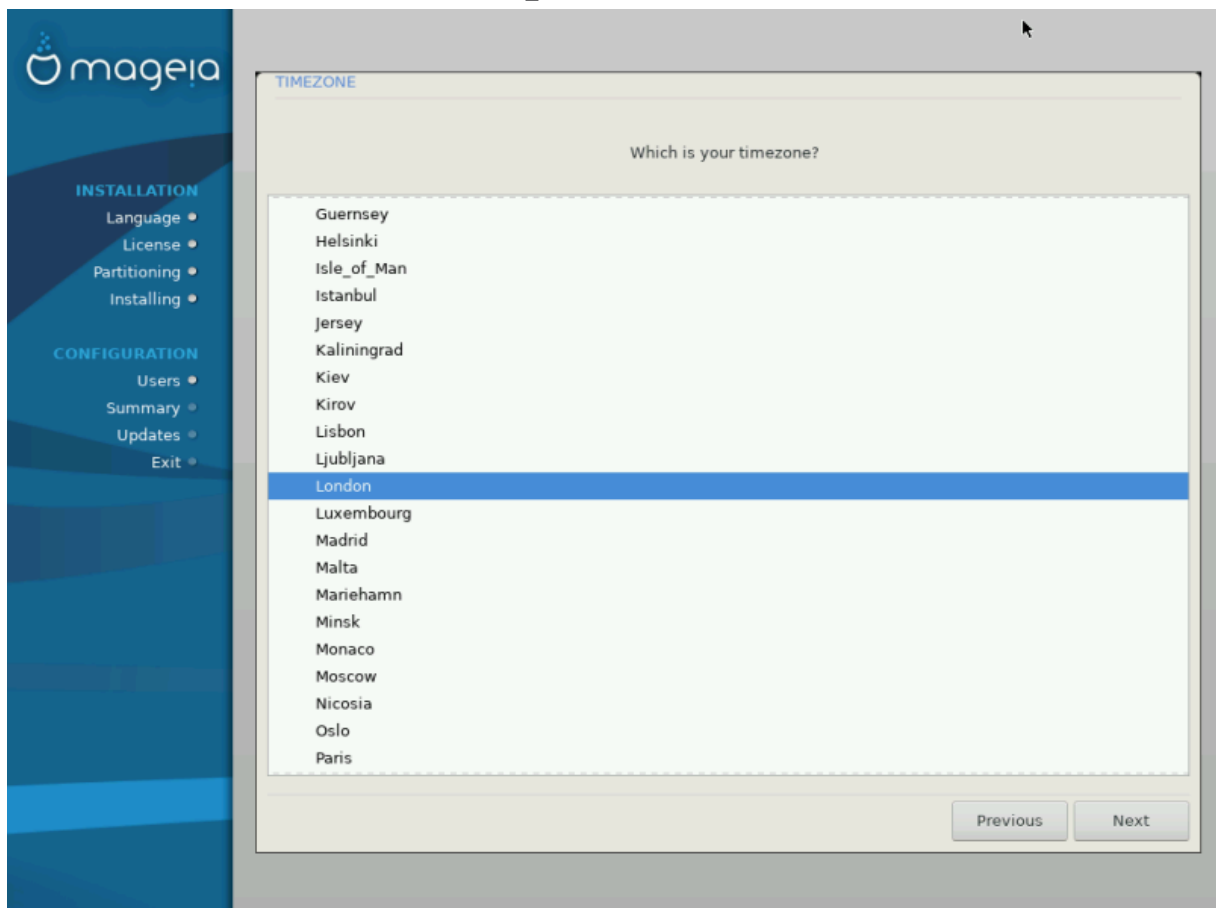
For more information, see [Firewall](#).



Bear in mind that allowing επερψητηνγ (no firewall) may be very risky.

14. Locale

14.1. Nastavenie časového pásma



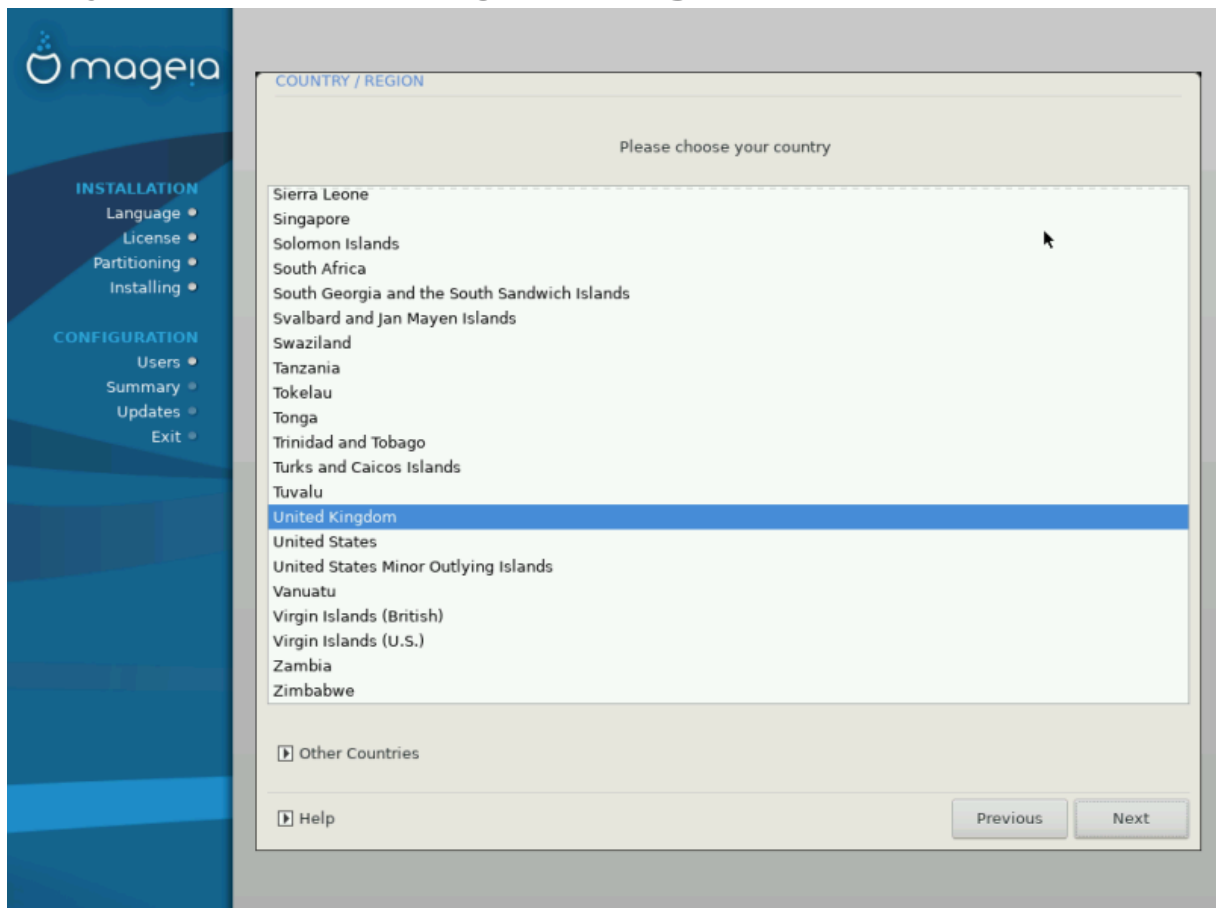
- Choose your timezone by choosing your country, or a city close to you in the same timezone.

In the next screen you can choose to set your hardware clock to local time or to GMT, also known as UTC.



Ak máte na vašom počítači viac než jeden operačný systém, uistite sa, že sú všetky nastavené na miestny čas, alebo všetky na UTC/GMT.

14.2. Vyberte si vašu Krajinu / Región



- Select your country or region. This is important for all kinds of settings, like the currency and wireless regulatory domain. Setting the wrong country can lead to being unable to use a Wireless network.
- If your country isn't in the list, click the *Άλλη Χώρα/Περιοχή* option and choose your country / region there.



If your country is only in the *Άλλη Χώρα/Περιοχή* list, after clicking OK it may seem that a country from the main list was chosen. Despite this, DrakX will actually apply your choice.

14.2.1. Vstupná metóda

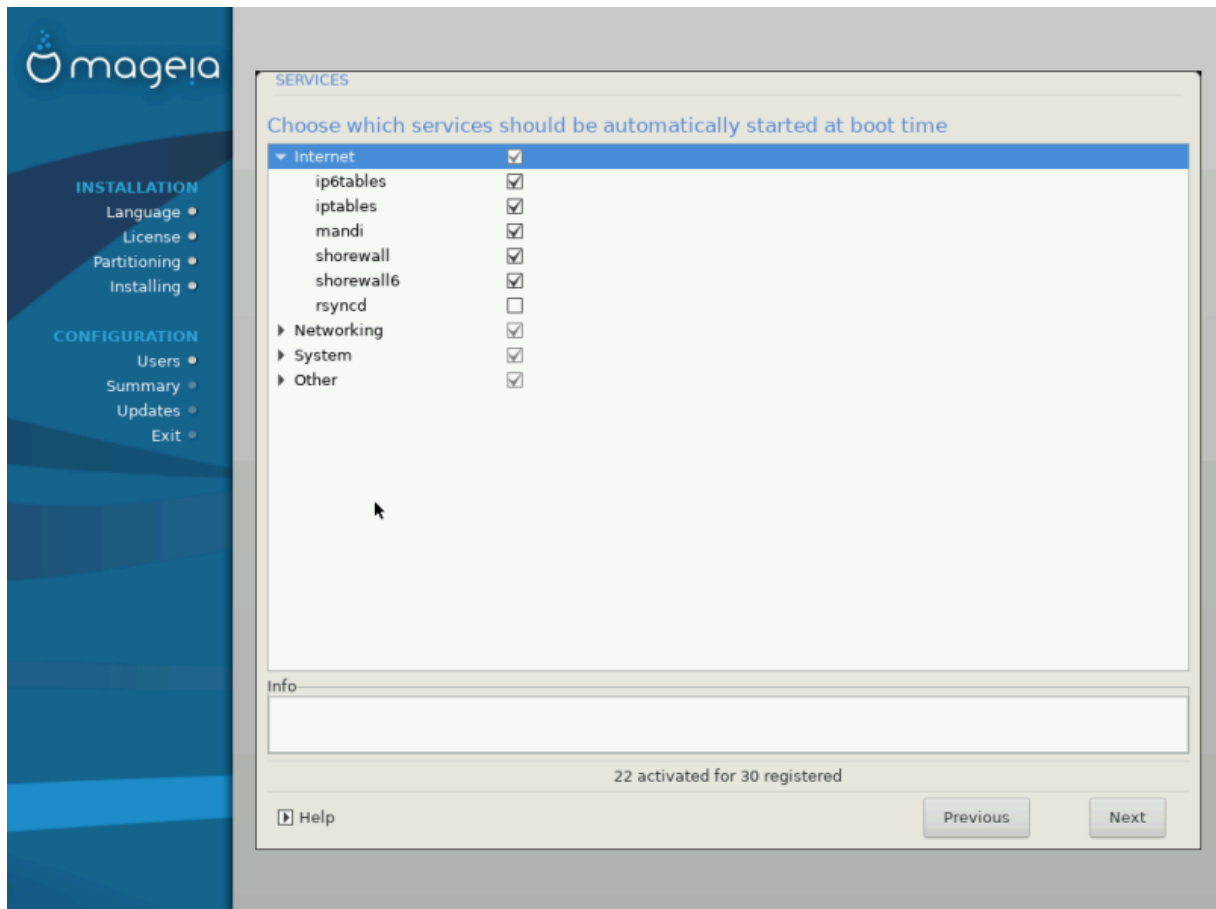
In the *Άλλη Χώρα/Περιοχή* screen you can also select an input method (at the bottom of the list). Input methods allow users to input multilingual characters (Chinese, Japanese,

Korean, etc). IBus is the default input method, so users should not need to configure it manually. Other input methods (SCIM, GCIN, HIME, etc) also provide similar functions and can be installed if you added HTTP/FTP media before package selection.



If you missed the input method setup during installation, you can access it post-install via Configure your Computer # System, or by running **localedrake** as root.

15. Nastavenie služieb

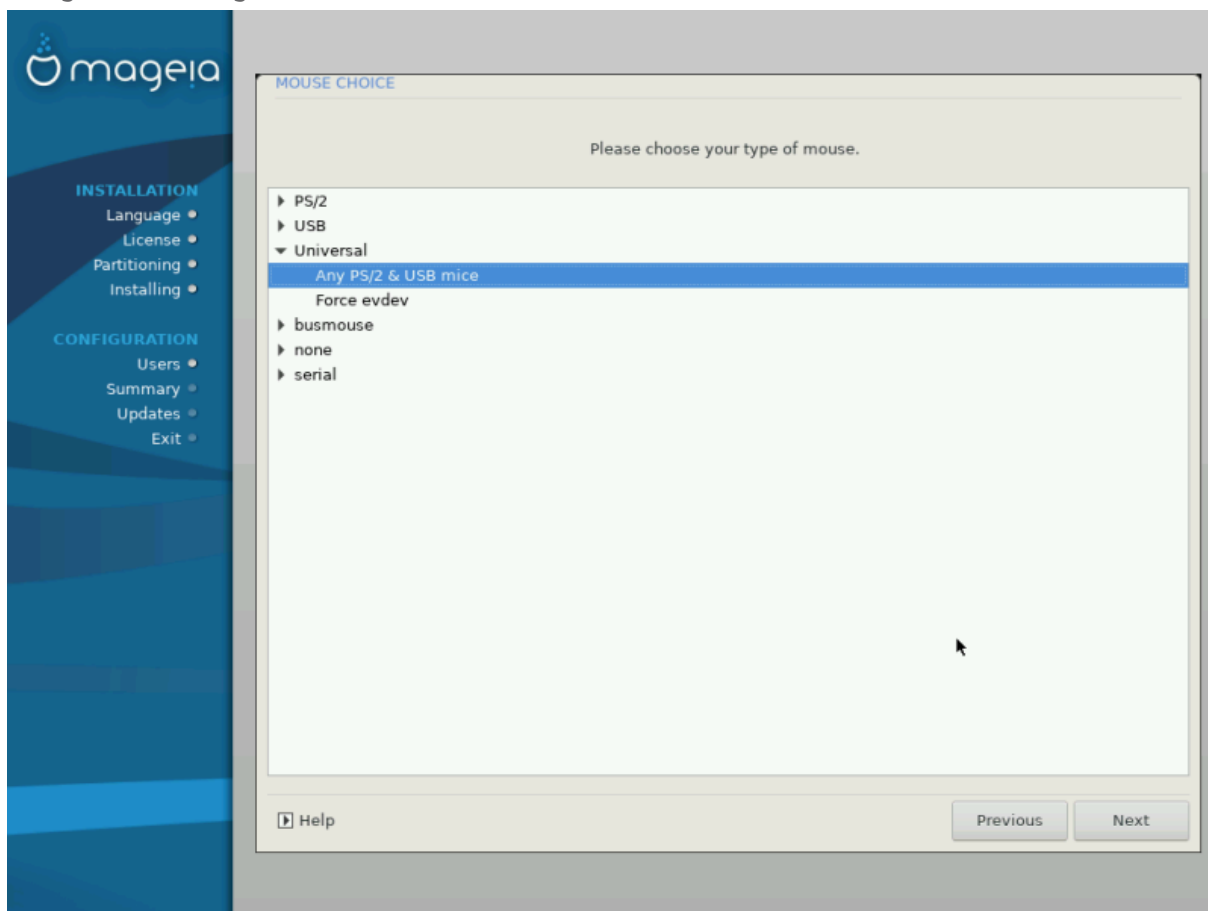


Here you can choose which services should start when you boot your system.

- Click on a triangle to expand a group to all the relevant services. The settings DrakX chose are usually good.
- Ak rozsvietite službu, niektoré informácie o nej sa ukážu v informačnom poli nižšie.

Veci meňte len vtedy, keď veľmi dobre viete, čo robíte.

16. Výber myši

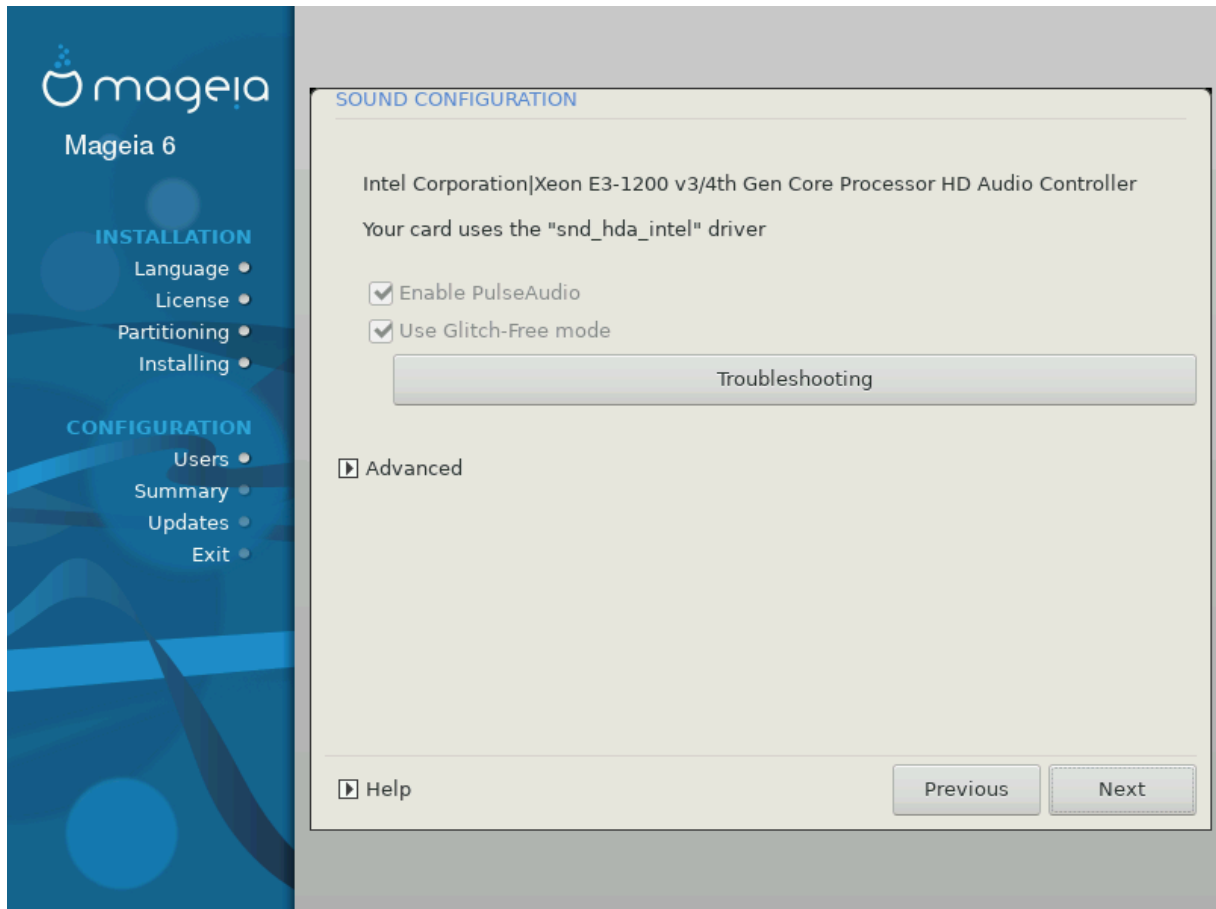


Ak nie ste spokojní s odozvou vašej myši, tu si môžete vybrať odlišnú myš.

Usually, Universal # Any PS/2 and USB mice is a good choice.

Select Universal # Force evdev to configure the buttons that do not work on a mouse with six or more buttons.

17. Konfigurácia zvuku



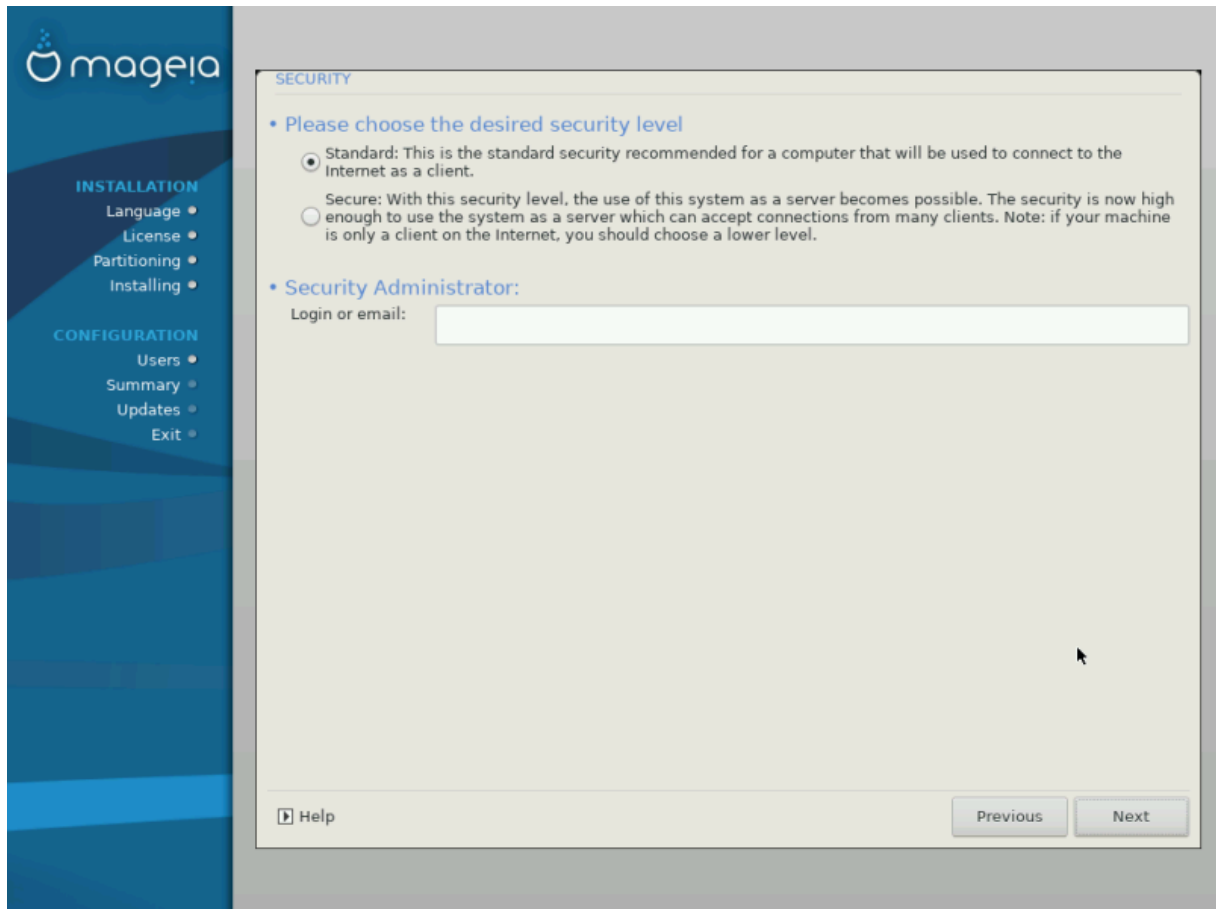
This screen shows the details of the sound card driver chosen for you by the installer, and this driver should work without problems.

However, if you encounter any issues post-install, then run **draksound** or start this tool via Mageia Control Center # Hardware # Sound Configuration. Then, in the draksound or Σουνδ Χονφιγυρατιον screen, click on Τρουνβλεσηροοσιγγ to find useful advice about how to solve the problem.

17.1. Rozšírené

If there is no actual default driver for your sound card, there may be other possible alternative drivers available to choose from. If this is the case, but you think the installer has not made the most appropriate choice, you can click on Αδωνανχεδ to manually specify a driver.

18. Úroveň bezpečnosti



Please choose the desired security level

Στανδαρδ is the default, and recommended setting for the average user.

Σεχυρε will create a highly protected system - for instance if the system is to be used as a public server.

Security Administrator

This item allows you to configure an email address to which the system will send σε-χυριτην αλερτ μεσσαγεσ when it detects situations which require notification to a system administrator.

A good, and easy-to-implement, choice is to enter <user>@localhost - where <user> is the login name of the user to receive these messages.



The system sends such messages as **Unix Mailspool messages**, not as "ordinary" SMTP mail: this user must therefore be configured for receiving such mail!

It will always be possible to adjust your security settings post-install in the Σεχυριτην section of the Mageia Control Center.

19. Firewall

This section allows you to configure some simple firewall rules: they determine which type of message from the Internet will be accepted by the target system. This, in turn, allows the corresponding services on the system to be accessible from the Internet.

In the default setting (no button is checked), no service of the system is accessible from the network. The Επερψτηινγ (νο φιρεωαλλ) option enables access to all services of the machine - an option that does not make much sense in the context of the installer since it would create a totally unprotected system. Its veritable use is in the context of the Mageia Control Center (which uses the same GUI layout) for temporarily disabling the entire set of firewall rules for testing and debugging purposes.

All other options are more or less self-explanatory. As an example, you will enable the CUPS server if you want printers on your machine to be accessible from the network.

Advanced

The Αδπαανχεδ option opens a window where you can enable a series of services by typing a list of “couples” (blank separated)

<πορτ-νυμβερ>/<προτοχολ>

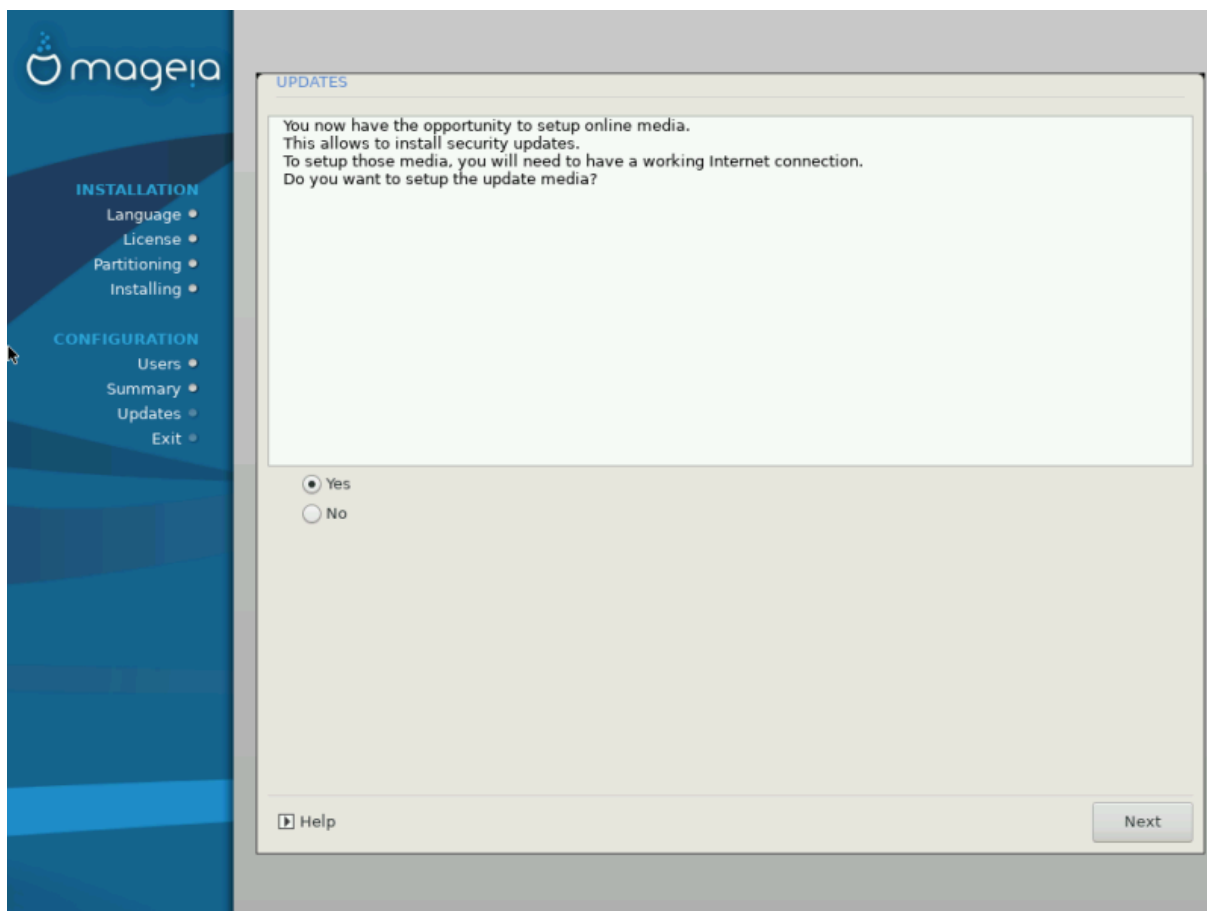
- <πορτ-νυμβερ> is the value of the port assigned to the service you want to enable (e.g. 873 for the RSYNC service) as defined in ΡΦΧ-433;

- <προτοχολ> is one of ΤΧΠΠ or ΥΔΠ - the internet protocol that is used by the service.

For instance, the entry for enabling access to the RSYNC service therefore is 873/τχηπ.

In case a service is implemented to use both protocols, you specify 2 couples for the same port.

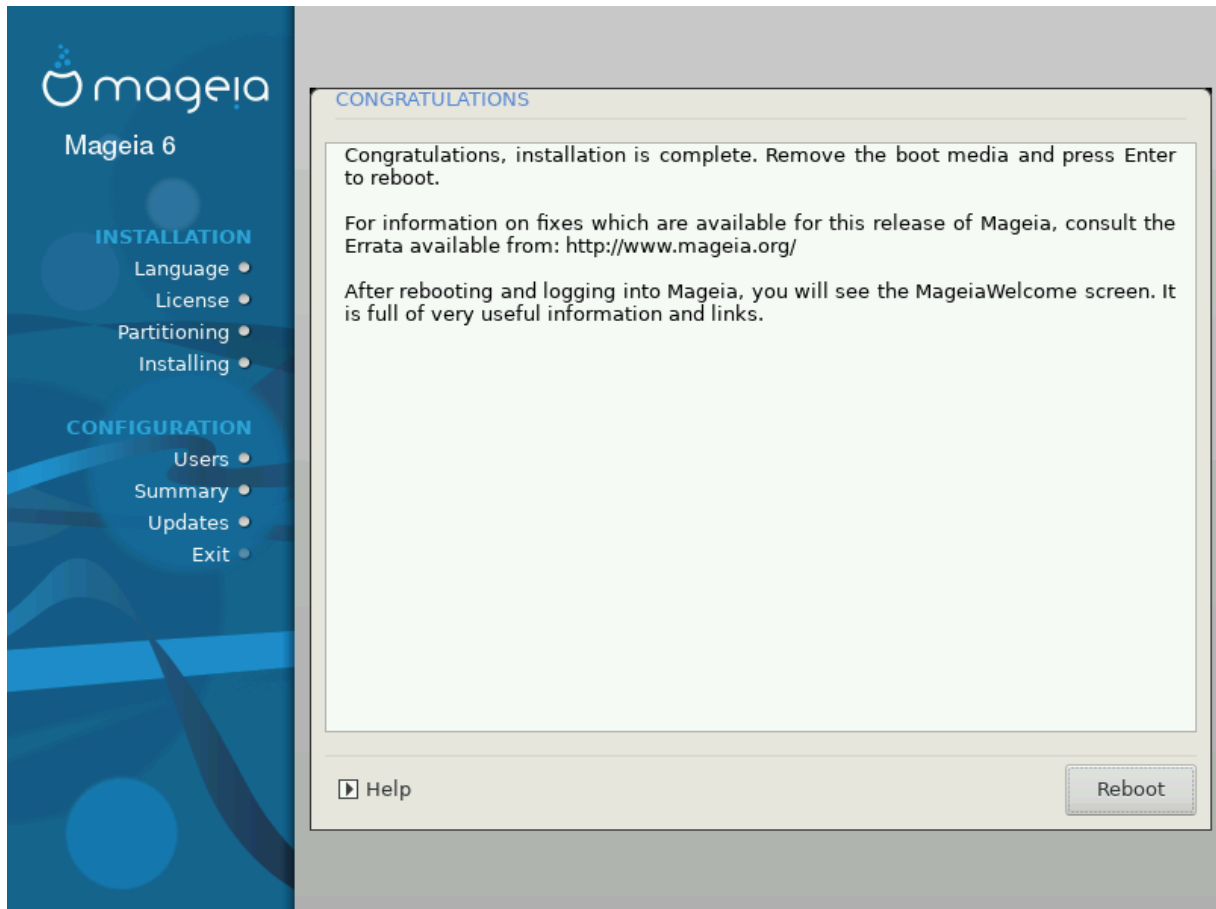
20. Aktualizácie



Since this version of Mageia was released, some packages will have been updated or improved.

- Select $\Psi\epsilon\sigma$ if you wish to download and install them
- Select $N\omicron$ if you don't want to do this now, or if you aren't connected to the Internet
- Press $N\epsilon\xi\tau$ to continue

21. Gratulujeme



You have finished installing and configuring Mageia and it is now safe to remove the installation medium and reboot your computer.

After rebooting, you can use the bootloader screen to choose which operating system to start (if there are more than one on your computer).

Ak ste neupravovali nastavenia pre zavádzací systém, automaticky bude vybraná a spustená vaša nainštalovaná Mageia.

Nech sa vám páči!

Visit www.mageia.org/en/ [http://www.mageia.org/en/] if you have any questions or want to contribute to Mageia

22. Odinštalovanie Mageie

If Mageia didn't convince you or you can't install it correctly - in short you want get rid of it - that is your right and Mageia also gives you the possibility to uninstall. This is not true for every operating system.

After backing up your data, reboot your Mageia installation DVD and select *Πεσχυε σψσ-τεμ*, then *Πεστορε Ωινδοωσ βοοτ λοαδερ*. At the next boot, you will only have Windows, with no option to choose your Mageia operating system.

In Windows, to recover the space used by Mageia partitions: click on Start # Control Panel # Administrative Tools # Computer Management # Storage # Disk Management.

You will recognise a Mageia partition because they are labeled Unknown, and also by their size and place on the disk. Right-click on each of these partitions and select $\Delta\epsilon\lambda\epsilon\tau\epsilon$ to free up the space.

If you are using Windows XP, you can create a new partition and format it (FAT32 or NTFS). It will then get a partition letter.

If you have Vista or 7, you have one more possibility, you can extend the existing partition that is at the left of the freed space. There are other partitioning tools that can be used, such as **gparted**, available for both Windows and Linux. As always, when changing partitions, be very careful to back up anything important to you.